



Heriot-Watt University
Research Gateway

Optimization of economic environmental and social benefits for integrated energy systems

Citation for published version:

Huynh, DC, Ho, LD & Dunnigan, MW 2021, 'Optimization of economic environmental and social benefits for integrated energy systems', *Journal of Engineering Science and Technology*, vol. 16, no. 2, pp. 1196-1212. <http://jestec.taylors.edu.my/Vol%2016%20issue%202%20April%202021/16_2_22.pdf>

Link:

[Link to publication record in Heriot-Watt Research Portal](#)

Document Version:

Peer reviewed version

Published In:

Journal of Engineering Science and Technology

Publisher Rights Statement:

© School of Engineering, Taylor's University

General rights

Copyright for the publications made accessible via Heriot-Watt Research Portal is retained by the author(s) and / or other copyright owners and it is a condition of accessing these publications that users recognise and abide by the legal requirements associated with these rights.

Take down policy

Heriot-Watt University has made every reasonable effort to ensure that the content in Heriot-Watt Research Portal complies with UK legislation. If you believe that the public display of this file breaches copyright please contact open.access@hw.ac.uk providing details, and we will remove access to the work immediately and investigate your claim.

OPTIMIZATION OF ECONOMIC ENVIRONMENTAL AND SOCIAL BENEFITS FOR INTEGRATED ENERGY SYSTEMS

Abstract

An optimal operating strategy is proposed for integrated energy systems under economic, environmental and social benefits based on a modified cuckoo search (MCS) algorithm. Each optimal operating strategy is a solution to a multi-objective optimization problem with non-linear constraints. The MCS algorithm is applied for finding out the optimal operating strategy of integrated energy systems. The cuckoo search (CS) algorithm is modified to increase the convergence speed where the first modification relates to the size of the Lévy flight step size and the second modification includes the addition of information exchange between the top eggs or the best results. The proposal is implemented to the integrated IEEE 10-generator energy system. The obtained results confirm the proposal's effectiveness for optimization of economic, environmental and social benefits of integrated energy systems. The particle swarm optimization (PSO) and CS algorithms are used to make comparisons showing the superiority of the MCS algorithm, as well as confirming the MCS algorithm's potential, especially in integrated energy systems.

Keywords: Optimization, Integrated energy systems, Cuckoo search algorithm.

1. Introduction

The classical optimal operating problem is to search an optimal operating strategy for generators [1]-[9].

Furthermore, due to environmental concerns arising from the emissions produced by fossil-fuelled thermal power plants, the classical problem of optimization can no longer be only considered to optimize the total cost of fuel. The environmental problem is proposed to optimize the emissions of sulphur oxides, SO_x and nitrogen oxides, NO_x caused by fossil-fuelled thermal power plants [10]-[13].

Additionally, it is important that the generated power has to be provided reliably to society. There is also a social impact on power outages [14]. This paper presents the optimal operating problem, taking into account the economic, environmental and social benefits. Especially, the problem is applied for an integrated energy system including thermal, wind and solar power plants [8]-[9], [14]-[18]. Obviously, the integrated energy system depends on uncontrollable natural conditions creating difficulties in the optimization.

There has been much research using various approaches to solve the optimal operating problem such as a distributed algorithm of the convex relaxation and dual decomposition which does not require any initialization process and robust to various changes [1]; an application of barnacles mating optimizer which is based on the behaviour of barnacles seeking of mating [2]; a combination of a bee algorithm and tabu search algorithm [3]; a particle swarm optimization algorithm [4], [8]; a teaching learning based optimization technique which is inspired by the teaching and learning process in a classroom environment [5]; a stochastic whale optimization algorithm [6]; an adaptive piecewise-quadratic under-approximation [7]; a cuckoo search algorithm [9], [11]; an evolutionary algorithm [10], [13], [15]; etc. It can be realized that there has recently been a significant number of modern meta-heuristic algorithms proposed for solving the optimal operating problem. These algorithms which are emerging and becoming increasingly popular are inspired by nature. There are two main characteristics of intensification and diversification in these algorithms. The effectiveness or ineffectiveness of a meta-heuristic algorithm obviously relies upon a proper trade-off between exploration and exploitation. If the trade-off is poor, then it will result in an unacceptable optimization approach. This paper proposes a MCS algorithm for the optimal operating problem of the integrated energy systems. The proposed MCS algorithm is to optimize the fuel cost, emission and risk cost of the integrated IEEE 10-generator energy system. The paper is organized as follows. The integrated energy system including thermal, solar and wind plants; and a load model is described in Section 2. The optimization of the integrated energy system is introduced in Section 3. A novel application of a MCS algorithm for the optimal operating problem is proposed in Section 4. The obtained results and comparisons follow to validate the proposal in Section 5. Finally, the proposal's advantages are summarized in Section 6.

2. Integrated energy systems

An optimization of the integrated energy system is obtained by harvesting maximum renewable energy during its availability. The integrated energy system include the thermal, solar and wind plants in this paper, where solar power is

produced either by solar PV panels, solar thermal plants, or both; while wind power is produced by wind turbines. The solar and wind powers are presented in Sections 2.1-2.2 followed by a description of the load model.

2.1. Solar energy source

The power of solar PV panels is obtained at the maximum power point (MPP) as follows [8]:

$$P_{PV} = \left[P_{PV,STC} \times \frac{G_T}{1000} \times \left[1 - c_t \times (T_C^0 - 25) \right] \right] \times N_{PVs} \times N_{PVp} \quad (1)$$

where

P_{PV} : the PV power at the MPP (W);

$P_{PV,STC}$: the rated PV power at the MPP and standard testing condition (STC) (W);

G_T : the irradiation level (W/m²);

c_t : the power temperature coefficient at the MPP (%/°C);

T_C^0 : the cell temperature (°C);

N_{PVs} and N_{PVp} : the number of modules in series and in parallel composing the PV generator, respectively.

The power of a solar thermal plant is given by:

$$P_{Ther} = \eta \times A_c \times G_T \quad (2)$$

where

P_{Ther} : the power of a solar thermal plant (W);

η : the collector efficiency;

A_c : the collector area (m²).

2.2. Wind energy source

The mechanical power recovered by a wind turbine is given by [8]:

$$P_{wind} = \frac{1}{2} \times C_e \times \rho \times A_s \times V_{wind}^3 \quad (3)$$

where

P_{wind} : the mechanical power of a wind turbine (W);

C_e : the efficiency factor depending on the wind speed and the system architecture;

ρ : the density of air (kg/m³), $\rho=1.225$ kg/m³;

A_s : the surface area traversed by the wind (m²);

V_{wind} : the wind speed (m/s).

2.3. Load model

It is obvious that the above integrated energy system depends on uncontrollable natural conditions forming challenges for optimizing. In order to simplify this issue, the harvested solar and wind powers are assumed as negative loads. Then, the actual load power is given by:

$$P_{load}^{Actual} = P_{load}^{Total} - (P_{solar} + P_{wind}) \quad (4)$$

where

P_{load}^{Actual} : the actual load power (W);

P_{load}^{Total} : the total load power (W);

P_{solar} : the solar generation power (W);

P_{wind} : the wind generation power (W).

3. Optimization of integrated energy systems

In this paper, the optimization is to minimize the objective functions of the fuel cost, emission and risk cost with several equality and inequality constraints. Based on the characteristics of thermal, solar and wind power generations, this multi-objective optimal operation is established as follows.

3.1. Objective function

3.1.1. Economic benefit based objective function

The economic benefit based objective function, f_1 is based on the fuel cost curves of thermal generators which are quadratic functions with a sine component to represent the valve loading effects. It is given by [8]:

$$f_1 = C(P_G) = \sum_{i=1}^{N_g} a_i + b_i P_{Gi} + c_i P_{Gi}^2 + \left| d_i \sin \left[e_i (P_{Gi} - P_{Gi}^{\min}) \right] \right| \quad (5)$$

where

$C(P_G)$: the total fuel cost (\$/h);

a_i , b_i and c_i : the cost coefficients of the i^{th} generator;

d_i and e_i : the cost coefficients of the i^{th} generator reflecting valve-point effects;

P_{Gi} : the active output power of the i^{th} generator (W);

P_{Gi}^{\min} : the lower limit of the active output power of the i^{th} generator (W);

P_{Gi}^{\max} : the upper limit of the active output power of the i^{th} generator (W);

P_G : the vector of the active output powers of generators defined as follows:

$P_G = [P_{G1}, P_{G2}, \dots, P_{GN_g}]$;

N_g : the total number of thermal generators in a power system.

3.1.2. Environmental benefit based objective function

The environmental benefit based objective function, f_2 is based on the total emission of atmospheric pollutants such as sulphur oxides, SO_x and nitrogen oxides, NO_x caused by fossil-fuelled thermal power plants. It is described by the polynomial and exponential terms of thermal generators as follows [21]:

$$f_2 = E(P_G) = \sum_{i=1}^{N_g} \alpha_i + \beta_i P_{Gi} + \gamma_i P_{Gi}^2 + \xi_i \exp(\omega_i P_{Gi}) \quad (6)$$

where

$E(P_G)$: the total emission (ton/h);

α_i , β_i , γ_i , ξ_i and ω_i : the emission coefficients of the i^{th} generator.

3.1.3. Social benefit based objective function

The social benefit based objective function, f_3 is based on a risk cost caused by solar and wind powers. The risk is the power outage producing social losses. It is as follows [14]:

$$f_3 = R_i P_{load}^{Actual} \quad (7)$$

$$R_t = \begin{cases} 1 - \frac{P_{reserved}^t}{P_{renewable}^t}, & P_{reserved}^t < P_{renewable}^t \\ 0, & P_{reserved}^t \geq P_{renewable}^t \end{cases} \quad (8)$$

where

R_t : the coefficient of the risk cost in t^{th} hour caused by solar and wind powers (\$/hW);

$P_{reserved}^t$: the spinning power reserved in t^{th} hour (W);

$P_{renewable}^t$: the output solar and wind powers in t^{th} hour (W).

3.2. Constraint conditions

The constraint conditions including power balance; power operation limit; ramp rate limit; and security operation are as follows:

3.2.1. Power balance

The power balance constraint is described by:

$$\sum_{i=1}^{N_g} P_{Gi} = P_{load}^{Actual} + P_{loss} \quad (9)$$

$$P_{loss} = \sum_{i=1}^{N_g} \sum_{j=1}^{N_g} P_{Gi} B_{ij} P_{Gj} + \sum_{i=1}^{N_g} B_{i0} P_{Gi} + B_{00} \quad (10)$$

where

P_{loss} : the active power loss in transmission lines (W);

B_{ij} , B_{i0} and B_{00} : the B -coefficients of the power loss of the power system which depend on the impedance parameters of the transmission lines.

3.2.2. Power operation limit

The power generation should be within the minimum and maximum limits as follows:

$$P_{Gi}^{\min} \leq P_{Gi} \leq P_{Gi}^{\max}, \quad i = 1, \dots, N_g \quad (11)$$

$$0 \leq P_{solar} \leq P_{solar}^{\max} \quad (12)$$

$$0 \leq P_{wind} \leq P_{wind}^{\max} \quad (13)$$

where

P_{solar}^{\max} : the upper limit of the solar generation power (W);

P_{wind}^{\max} : the upper limit of the wind generation power (W).

3.2.3. Ramp up and down rate power limit

The ramp up and down rate power constraints for thermal generating units are described as follows:

$$P_{G_i}(t) - P_{G_i}(t-1) \leq P_{G_i}^{up} \quad (14)$$

$$P_{G_i}(t-1) - P_{G_i}(t) \leq P_{G_i}^{down} \quad (15)$$

where

$P_{G_i}^{up}$ and $P_{G_i}^{down}$: the ramp up and down rate power limits of the i^{th} generator, respectively (W).

3.2.4. Security operation

For security operation, the transmission line loading, S_l is restricted by its upper limit as follows:

$$S_{li} \leq S_{li}^{\max}, i=1, \dots, n_l \quad (16)$$

where

S_{li} : the transmission line loading;

S_{li}^{\max} : the upper limit of the transmission line loading;

n_l : the number of transmission lines.

3.3. Optimization model

3.3.1. Economic optimization

The economic optimization is based on the fuel cost function of thermal generators. Then, the objective function, f_1 is minimized.

3.3.2. Economic and environmental optimization

The economic and environmental optimization is described by the fuel cost and emission functions respectively, f_1 and f_2 . This is to optimize the fuel cost and emission of thermal generators.

3.3.3. Economic, environmental and social optimization

The economic, environmental and social optimization is established by the fuel cost, emission and risk cost functions respectively, f_1 , f_2 and f_3 . This model is optimized to ensure that the fuel cost and emission of thermal generators as well as the risk cost caused by solar and wind powers are minimal. The MCS algorithm is proposed to solve the models of the economic optimization; the economic and environmental optimization; and the economic, environmental and social optimization of the integrated energy system with the thermal, wind and solar powers.

4. Modified cuckoo search algorithm based optimization

The CS algorithm is a stochastic global search algorithm based on the interesting breeding behaviour such as brood parasitism of certain species of cuckoos [19]. The CS and MCS algorithms are presented in detail in Sections 4.1 - 4.2.

4.1. Cuckoo search algorithm

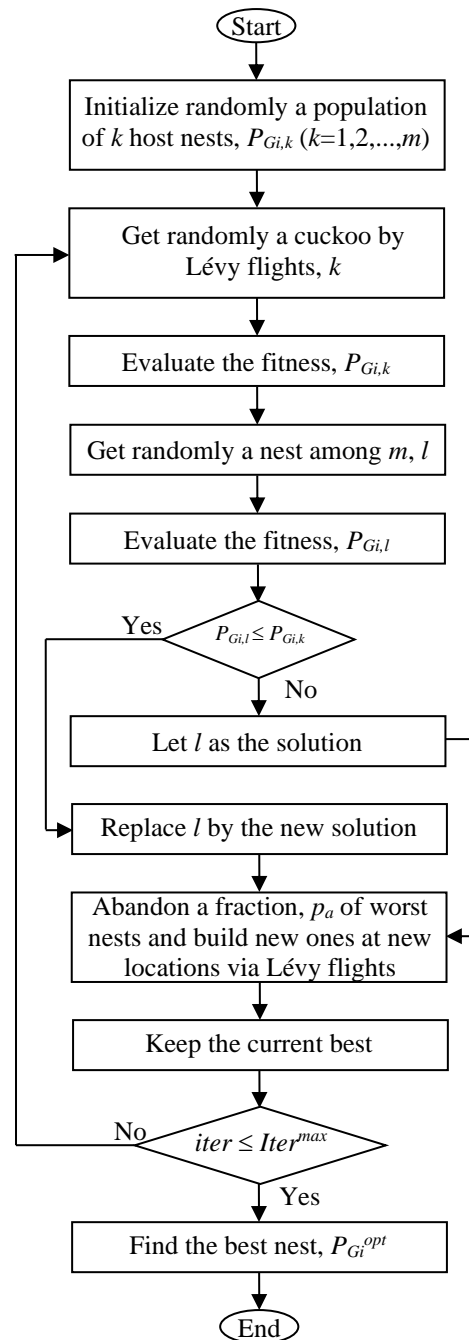


Fig. 1. CS algorithm flowchart applied for the optimal operating problem.

The breeding strategy of some cuckoos by laying their eggs in the nest of host birds is utilized where the cuckoo randomly chooses the nest position to lay an egg that is a new solution, $P_{G_i,k}^{iter+1}$ in the optimization through the Lévy flight behaviour [19].

$$P_{G_i,k}^{iter+1} = P_{G_i,k}^{iter} + \varepsilon \oplus Levy(\sigma) \quad (17)$$

where

$\varepsilon > 0$: the step size;

k : the k^{th} host nest, $k=[1, \dots, m]$;

l : the l^{th} random nest, $l=[1, \dots, m]$;

m : the number of the host nest;

$iter$: the $iter^{\text{th}}$ iteration;

$Iter_{max}$: the number of maximum iteration;

\oplus : the product of the entry wise multiplications;

p_a : the possibility of an alien egg to be discovered by host bird, $p_a \in [0, 1]$.

The step length, Lévy(σ) is given by:

$$Lévy(\sigma) = t^\sigma, \sigma \in (1, 3] \quad (18)$$

The flowchart of the CS algorithm, applied for the optimal operating problem is shown as in Fig. 1.

4.2. Modified cuckoo search algorithm

It is obvious that the CS algorithm is always converged, however the convergence speed and value are sometimes poor. A MCS algorithm has been introduced to improve the convergence for optimizing of the integrated energy system. The objective functions are in (5)-(8); as well as the equality and inequality constraints are in (9)-(16).

The modifications are described as follows [20]:

The first modification is made to the Lévy flight step size, ε that is a constant value, $\varepsilon=1$ [19] in the CS algorithm. This affected the ability of the localized searching when the solution get closer to the best one. In the MCS algorithm, the value of ε is made to decrease as the number of generations increases so that the searching performance is improved. An initial value of the Lévy flight step size, $\varepsilon_0=1$ is chosen and then, a new Lévy flight step size is calculated at each generation as follows:

$$\varepsilon_i = \frac{\varepsilon_0}{\sqrt{iter}} \quad (19)$$

where

ε_0 : the initial value of the Lévy flight step size.

The second modification is to speed up the convergence by adding information exchange between top solutions which is not available in the CS algorithm. The

information exchange in the MCS algorithm is described as follows:

A fraction of the eggs with the best fitness are put into a group of top elite eggs and each of the top elite eggs randomly picks a second elite egg.

A new egg is then generated along the line connecting these two top elite eggs.

If both eggs have the same fitness, then the new egg will be generated at the midpoint. There is a possibility that the same egg is picked twice in this step. In this case, a local Lévy flight search is performed from the randomly picked nest that the Lévy flight step size, ε is given by:

$$\varepsilon_i = \frac{\varepsilon}{iter^2} \quad (20)$$

The MCS algorithm is proposed to find out optimal powers, P_{Gi} in order to ensure the optimization of the economic, environmental and social benefits of the integrated energy system.

5. Numerical results

The numerical results of the optimal operating problems are implemented on the integrated IEEE-10 generator energy system with the solar and wind energy sources by using the MCS algorithm, Fig. 2.

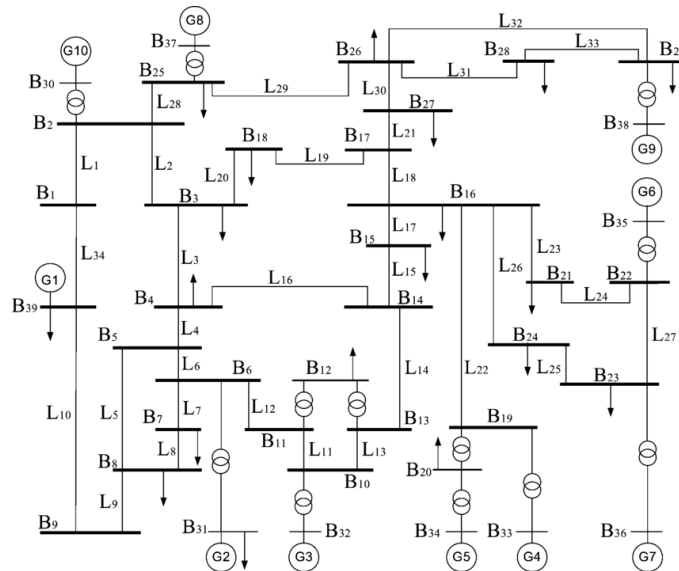


Fig. 2. IEEE-10 generator power system.

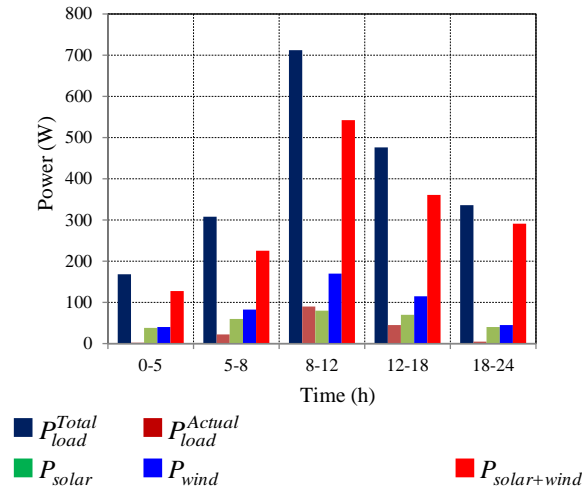


Fig. 3. Total and actual load powers; and the solar and wind powers obtained.

The fuel cost coefficients and active generation limits; the emission coefficients; and the values of the B -coefficients matrix for the IEEE-10 generator energy system are in Tables 1-3 [21].

The solar power, P_{solar} including the PVs' power, P_{pv} and the power of solar thermal plants, P_{ther} as well as the power of wind turbines, P_{wind} of the 24 hours are assumed; and then, the total and actual load demands are calculated as in Table 4.

Fig. 3 obviously shows that the total power of traditional thermal generators has been cut down by the solar and wind powers. The average reduction is 22.64%. In the period of 8h-12h, the total power of the renewable energy sources generated is highest, 170 MW including the solar power, $P_{solar}=90$ MW and the wind power, $P_{wind}=80$ MW. Furthermore, the percentage of the total power of traditional thermal generators cut down is largest in the period of 5h-8h, 26.79%. These positively impact on the factors concerning the fuel cost and emission minimization of the power system. This also confirms a tendency towards modern power systems including renewable energy sources in the future. Table 5 shows the parameters of the CS and MCS algorithms. The difference between these two algorithms is the chosen value of the Lévy flight step size, ε .

In the numerical results, the Lévy flight step size is a constant value, $\varepsilon=0.5$ in the CS algorithm and is a generation-varying variable in the MCS algorithm. This is to improve the convergence ability of the CS algorithm including the convergence speed and value. In both the CS and MCS algorithms, the number of nests is 10; the number of maximum iterations is 200; and the probability of an alien egg is 0.6.

Figs. 4-8 show the convergence characteristics of the fuel cost minimization with the solar and wind energy sources using the CS and MCS algorithms. With the CS algorithm, the economic optimization problem converges at the 39th, 44th, 43rd, 41st and 40th iterations whereas with the MCS algorithm, it converges at the 14th, 15th, 16th, 17th and 16th iterations in the periods of 0h-5h, 5h-8h, 8h-12h, 12h-18h and

18h-24h respectively. It is obvious that the convergence speed of the MCS algorithm is always faster than that of the CS algorithm.

Furthermore, in the period of 0h-5h, the optimal fuel costs are 0.0559×10^5 (\$/h); 0.0598×10^5 (\$/h); 0.0617×10^5 (\$/h) and 0.0643×10^5 (\$/h) using the MCS, CS, Chaos PSO and time varying acceleration based PSO (TVAC-PSO) algorithms respectively which show that the convergence value of the MCS algorithm is better than that of the CS, Chaos PSO and TVAC-PSO algorithms in the economic optimization, Table 6. This is also similar in the periods of 5h-8h, 8h-12h, 12h-18h and 18h-24h. Obviously, both the convergence speed and value are improved using the MCS algorithm compared with the CS, Chaos PSO and TVAC-PSO algorithms in the economic optimization. The improvement is due to the Lévy flight step size being made to decrease as the number of generations increases in order to improve the searching performance as well as there is the information exchange between the solutions in an attempt to speed up convergence to an optimal solution.

Tables 6-8 show the best solutions for the economic optimization problem of the fuel cost minimization; the economic and environmental optimization problem of the fuel cost and emission minimization; and the economic, environmental and social optimization problem of the total cost and emission minimization of the integrated IEEE 10-generator energy system using the MCS, CS, Chaos PSO and TVAC-PSO algorithms.

In the period of 0h-5h, using the MCS algorithm, the optimal total cost is 0.0559×10^5 (\$/h) in the economic optimization problem, Table 6. The optimal total cost is 0.0440×10^5 (\$/h) in the economic and environmental problem, Table 7 which is significantly reduced as compared with the optimal total cost, 0.0559×10^5 (\$/h) in the economic optimization problem, Table 6. The reduction percentage of the total cost is 21.29%. Additionally, the optimal total cost is 0.0463×10^5 (\$/h) in the economic, environmental and social optimization problem, Table 8 which is a little higher than the optimal total cost, 0.0440×10^5 (\$/h) in the economic and environmental optimization problem, Table 7. The increment percentage is 4.97%. This is due to the consideration of the social benefit in the economic, environmental and social optimization problem. Then, the total cost in the economic, environmental and social optimization problem is increased compared with this in the economic and environmental problem. Obviously, it is necessary to consider the social benefit to manage the risk of power systems integrated with the solar and wind energy sources because of their randomness. The result analysis is the same in the periods of 5h-8h, 8h-12h, 12h-18h and 18h-24h which shows the MCS algorithm's stability in both the convergence speed and value.

Similarly, in the period of 0h-5h, the optimal emission amounts are 233.4862 (ton/h); 254.2705 (ton/h); 257.5096 (ton/h) and 269.9262 (ton/h) using the MCS, CS, Chaos PSO and TVAC-PSO algorithms respectively. This also shows that the convergence value of the MCS algorithm is better than that of the CS, Chaos PSO and TVAC-PSO algorithms in the economic and environmental optimization. This is also the same in the periods of 5h-8h, 8h-12h, 12h-18h and 18h-24h, Table 7. The MCS algorithm also shows its advantages in the convergence values of the optimal total cost and emission amount of the economic, environmental and social optimization in the periods of 0h-5h, 5h-8h, 8h-12h, 12h-18h and 18h-24h, Table 8.

Table 9 shows the comparison of the best solution for the economic, environmental and social optimization of the total cost and emission minimization of the IEEE 10-generator power system with and without the solar and wind powers using the MCS algorithm. In the period of 0h-5h, the total costs are 0.0463×10^5 (\$/h) and 0.0538×10^5 (\$/h) respectively with and without the solar and wind powers. The total cost reduction is 0.0075×10^5 (\$/h) and the improvement percentage of the total cost is 13.96%. Similarly, the emission amounts are 215.0408 (ton/h) and 226.7605 (ton/h) respectively with and without the solar and wind powers. The emission reduction is 11.7197 (ton/h) and the improvement percentage of the emission amount is 5.17%.

Obviously, the improved percentages of the total cost and the emission amount are always higher than 9% and 5% respectively by integrating the solar and wind powers. Especially, the improved percentage of the total cost is highest in the period of 5h-8h with 14.92%, since the percentage of the total power of traditional thermal generators cut down is largest in the period of 5h-8h, 26.79%. The improved percentage of the emission amount is highest in the period of 8h-12h with 13.96%. This is due to the solar and wind powers generated are highest, 170 MW in the period of 8h-12h. These show the effectiveness of integrating solar and wind powers into the energy system in the total cost and emission amount.

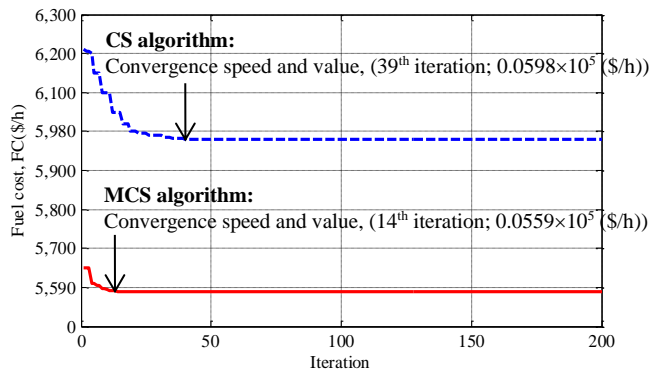


Fig. 4. Convergence characteristic of the fuel cost minimization with the solar and wind energy sources using the CS and MCS algorithms, $t=(0-5)h$.

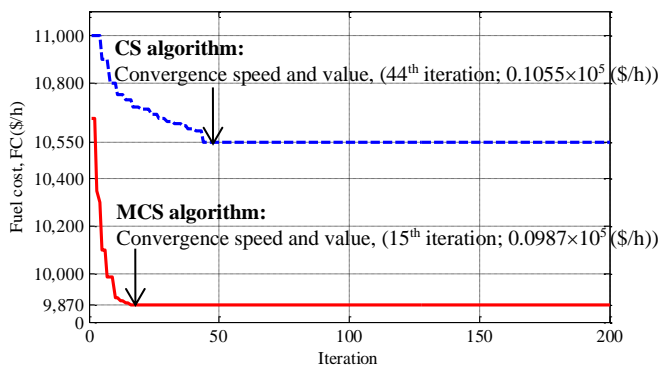


Fig. 5. Convergence characteristic of the fuel cost minimization with the solar and wind energy sources using the CS and MCS algorithms, $t=(5-8)$ h.

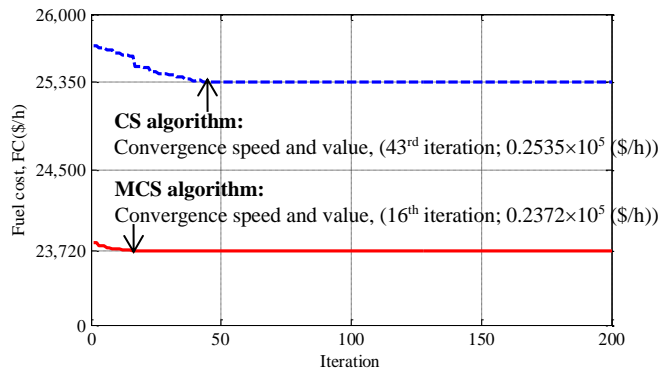


Fig. 6. Convergence characteristic of the fuel cost minimization with the solar and wind powers using the CS and MCS algorithms, $t=(8-12)$ h.

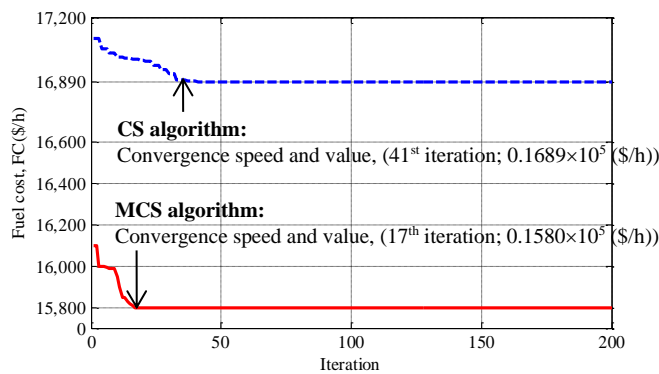


Fig. 7. Convergence characteristic of the fuel cost minimization with the solar and wind powers using the CS and MCS algorithms, $t=(12-18)$ h.

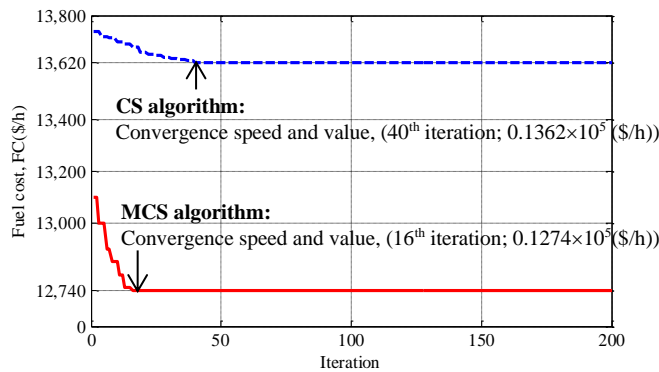


Fig. 8. Convergence characteristic of the fuel cost minimization with the solar and wind powers using the CS and MCS algorithms, $t=(18-24)$ h.

Table 1. Fuel cost coefficients and active power generation limits of the IEEE-10 generator power system.

G_i	a_i	b_i	c_i	d_i	e_i	$P_{G_i}^{min}$	$P_{G_i}^{max}$
1	1000.403	40.5407	0.12951	33	0.0174	10	55
2	950.606	39.5804	0.10908	25	0.0178	20	80
3	900.705	36.5104	0.12511	32	0.0162	47	120
4	800.705	39.5104	0.12111	30	0.0168	20	130
5	756.799	38.5390	0.15247	30	0.0148	50	160
6	451.325	46.1592	0.10587	20	0.0163	70	240
7	1243.531	38.3055	0.03546	20	0.0152	60	300
8	1049.998	40.3965	0.02803	30	0.0128	70	340
9	1658.569	36.3278	0.02111	60	0.0136	135	470
10	1356.659	38.2704	0.01799	40	0.0141	150	470

Table 2. Emission coefficients of the IEEE-10 generator power system.

G_i	α	β	γ	ξ	ω
1	360.0012	-3.9864	0.04702	0.25475	0.01234
2	350.0056	-3.9524	0.04652	0.25475	0.01234
3	330.0056	-3.9023	0.04652	0.25163	0.01215
4	330.0056	-3.9023	0.04652	0.25163	0.01215
5	13.8593	0.3277	0.00420	0.24970	0.01200
6	13.8593	0.3277	0.00420	0.24970	0.01200
7	40.2669	-0.5455	0.00680	0.24800	0.01290
8	40.2669	-0.5455	0.00680	0.24990	0.01203
9	42.8955	-0.5112	0.00460	0.25470	0.01234
10	42.8955	-0.5112	0.00460	0.25470	0.01234

Table 3. Values of the B-coefficient matrix for the IEEE-10 generator power system

$$[B] = 10^{-6} \times \begin{bmatrix} 49 & 14 & 15 & 15 & 16 & 17 & 17 & 18 & 19 & 20 \\ 14 & 45 & 16 & 16 & 17 & 15 & 15 & 16 & 18 & 18 \\ 15 & 16 & 39 & 10 & 12 & 12 & 14 & 14 & 16 & 16 \\ 15 & 16 & 10 & 40 & 14 & 10 & 11 & 12 & 14 & 15 \\ 16 & 17 & 12 & 14 & 35 & 11 & 13 & 13 & 15 & 16 \\ 17 & 15 & 12 & 10 & 11 & 36 & 12 & 12 & 14 & 15 \\ 17 & 15 & 14 & 11 & 13 & 12 & 38 & 16 & 16 & 18 \\ 18 & 16 & 14 & 12 & 13 & 12 & 16 & 40 & 15 & 16 \\ 19 & 18 & 16 & 14 & 15 & 14 & 16 & 15 & 42 & 19 \\ 20 & 18 & 16 & 15 & 16 & 15 & 18 & 16 & 19 & 44 \end{bmatrix}$$

Table 4. Total and actual load demands of 24 hours.

t (h)	P_{load}^{Total} (MW)	P_{solar} (MW)	P_{wind} (MW)	P_{solar+} P_{wind}	P_{load}^{Actual} (MW)	$\Delta \sum P_{G_i}$
------------	----------------------------	---------------------	--------------------	----------------------------	-----------------------------	-----------------------

				(MW)		(%)
0-5	168.00	2.25	38.00	40.25	127.75	23.96
5-8	308.00	22.50	60.00	82.50	225.50	26.79
8-12	712.00	90.00	80.00	170.00	542.00	23.88
12-18	476.00	45.00	70.00	115.00	361.00	24.16
18-24	336.00	5.00	40.00	45.00	291.00	13.39
Total	2000.00	164.75	288.00	452.75	1547.25	22.64

Table 5. Parameters of the CS and MCS algorithms.

Parameter	Value	
	CS	MCS
Number of nest, m	10	10
Number of maximum iteration, $Iter^{max}$	200	200
Lévy flight step size, ε	0.5	Using (18) and (19)
Possibility of alien egg, p_a	0.6	0.6

Table 6. Comparison of the best solution for the optimal economic operation of the fuel cost minimization with the solar and wind energy sources using TVAC-PSO and Chaos PSO, CS and MCS algorithms.

t (h)	Fuel cost, FC(\$/h) $\times 10^5$			
	TVAC-PSO	Chaos PSO	CS	MCS
0-5	0.0643	0.0617	0.0598	0.0559
5-8	0.1134	0.1089	0.1055	0.0987
8-12	0.2726	0.2617	0.2535	0.2372
12-18	0.1816	0.1743	0.1689	0.1580
18-24	0.1464	0.1405	0.1362	0.1274

Table 7. Comparison of the best solution for the optimal economic and environmental operation of the fuel cost and emission minimization with the solar and wind energy sources using TVAC-PSO and Chaos PSO, CS and MCS algorithms.

t (h)	TVAC-PSO		Chaos PSO		CS		MCS	
	Fuel cost, FC (\$/h) $\times 10^5$	Emission, E (ton/h)	Fuel cost, FC (\$/h) $\times 10^5$	Emission, E (ton/h)	Fuel cost, FC (\$/h) $\times 10^5$	Emission, E (ton/h)	Fuel cost, FC (\$/h) $\times 10^5$	Emission, E (ton/h)
0-5	0.0508	269.9262	0.0486	257.5096	0.0478	254.2705	0.0440	233.4862
5-8	0.0896	476.4646	0.0857	454.5472	0.0842	448.8297	0.0777	412.1419
8-12	0.2154	1145.2054	0.2061	1092.5260	0.2025	1078.7835	0.1868	990.6027
12-18	0.1435	762.7659	0.1373	727.6787	0.1349	718.5255	0.1244	659.7925
18-24	0.1157	614.8612	0.1107	586.5776	0.1088	579.1993	0.1003	531.8549

Table 8. Comparison of the best solution for the optimal economic, environmental and social operation of the total cost and emission

**minimization with the solar and wind energy sources using TVAC-PSO,
Chaos PSO, CS and MCS algorithms.**

t (h)	TVAC-PSO		Chaos PSO		CS		MCS	
	Total cost, TC (\$/h)×10 ⁵	Emission, E (ton/h)	Total cost, TC (\$/h)×10 ⁵	Emission, E (ton/h)	Total cost, TC (\$/h)×10 ⁵	Emission, E (ton/h)	Total cost, TC (\$/h)×10 ⁵	Emission, E (ton/h)
0-5	0.0558	262.6382	0.0531	247.7242	0.0519	243.8454	0.0463	215.0408
5-8	0.0983	463.6001	0.0937	437.2744	0.0916	430.4276	0.0817	379.5827
8-12	0.2364	1114.2849	0.2253	1051.0100	0.2201	1034.5534	0.1965	912.3451
12-18	0.1575	742.1712	0.1501	700.0269	0.1466	689.0659	0.1309	607.6689
18-24	0.1270	598.2599	0.1210	564.2876	0.1182	555.4521	0.1055	489.8384

Table 9. Comparison of the best solution for the optimal economic, environmental and social operation of the total cost and emission minimization with and without the solar and wind powers using MCS algorithm.

t (h)	Without the solar and wind powers		With the solar and wind powers		Comparison between with and without the solar and wind powers			
	Total cost, TC(\$/h)×10 ⁵	Emission, E(ton/h)	Total cost, TC(\$/h)×10 ⁵	Emission, E(ton/h)	ΔTC (\$/h)×10 ⁵	ΔTC (%)	ΔE (ton/h)	ΔE (%)
0-5	0.0538	226.7605	0.0463	215.0408	0.0075	13.96	11.7197	5.17
5-8	0.0960	418.1483	0.0817	379.5827	0.0143	14.92	38.5656	9.22
8-12	0.2277	1060.4187	0.1965	912.3451	0.0312	13.70	148.0736	13.96
12-18	0.1524	688.7319	0.1309	607.6689	0.0215	14.13	81.0630	11.77
18-24	0.1160	527.3110	0.1055	489.8384	0.0105	9.07	37.4726	7.11
TOTAL	0.6460	2921.3705	0.5609	2604.4759	0.0851	13.17	316.8946	10.85

6. Conclusions

The MCS algorithm is a variant of the CS algorithm with the generation varying Lévy flight step size, has been proposed to find out a solution for the optimal operating problem of the integrated energy system.

The results achieved validate the proposed application. It is obvious that the results of using the MCS algorithm are always better than those of using the CS, Chaos PSO and TVAC-PSO algorithms.

Additionally, the fuel cost, emission and risk cost of the integrated energy system are always less than those without the integration. It means that the solar and wind powers has efficiently supported to optimize the economic, environmental and social benefits.

References

1. Lee, S.; and Shimm H. (2019). Distributed algorithm for economic dispatch problem with separable losses. *IEEE Control Systems Letters*, 3(3), 685-690.
2. Sulaiman, M. H.; Mustaffa, Z.; and Aliman, O. (2019). An application of Barnacles mating optimizer for solving economic dispatch problems. *IEEE Jordan International Joint Conference on Electrical Engineering and Information Technology, JEEIT 2019*, 112-117.

3. Chansareewittaya, S. (2018). Hybrid BA/ATS for economic dispatch problem. *International Computer Science and Engineering Conference, ICSEC 2018*, 568-573.
4. Mei, J.; and Zhao, J. (2018). An enhanced quantum-behaved particle swarm optimization for security constrained economic dispatch. *International Symposium on Distributed Computing and Applications for Business Engineering and Science, DCABES 2018*, 921-926.
5. Valluuru, H. V.; Khandavilli, S.; Sela, N. V. S. K. C.; Thota, P. R.; and Muktevi, L. N. V. (2018). Modified TLBO technique for economic dispatch problem. *International Conference on Intelligent Computing and Control Systems, ICICCS 2018*, 1970-1973.
6. Mohamed, F.; Abdel-Nasser, M.; Mahmoud, K.; and Kamel, S. (2018). Economic dispatch using stochastic whale optimization algorithm. *International Conference on Innovative Trends in Computer Engineering, ITCE 2018*, 19-24.
7. Absil, P. A.; Sluysmans, B.; and Stevens, N. (2018). MIQP-based algorithm for the global solution of economic dispatch problems with valve-point effects. *Power Systems Computation Conference*, 56-62.
8. Huynh, D. C.; and Nirmal, N. (2015). Chaos PSO algorithm based economic dispatch of hybrid power systems including solar and wind energy sources. *IEEE Conference on Innovative Smart Grid Technologies, ISGT-ASIA 2015*, 1-6.
9. Huynh, D. C.; and Nirmal, N. (2015). Economic dispatch integrating wind power generation farms using cuckoo search algorithm. *IEEE Conference on Innovative Smart Grid Technologies, ISGT-ASIA 2015*, 6-12.
10. Ma, S.; Wang, Y.; and Lv, Y. (2018). Multiple environment/economic power dispatch using evolutionary multi-objective optimization. *IEEE Access*, 6(1), 13066-13074.
11. Khalil, M.; Wibowo, R. S.; and Penangsang, O. (2018). Combined economic emission dispatch with cubic criterion function using cuckoo search algorithm. *International Conference on Information and Communications Technology, ICOIACT 2018*, 36-40.
12. Liang, H.; Liu, Y.; Shen, Y.; and Li, F. (2017). A multi-objective chaotic bat algorithm for economic and emission dispatch. *Chinese Automation Congress, CAC 2017*, 1-6.
13. Lin, Z.; Chiang, T.; and Lee, C. (2017). Adaptive multi-objective differential evolution algorithms for environment/economic dispatch. *International Congress on Advanced Applied Informatics, AAI 2017*, 909-914.
14. Niu, D.; and Wei, Y. (2013). A novel social-environmental-economic dispatch model for thermal/wind power generation and application. *International Journal of Innovative Computing, Information and Control*, 9(7), 3005-3014.
15. Niu, Q.; Wang, H.; and Zhang, Y. (2019). Restart covariance matrix adaptation evolution strategy for solving wind-integrated emission economic dispatch problems. *IEEE Congress on Evolutionary Computation, CEC 2019*, 1-6.
16. Tang, C.; Liang, C.; and Hu, Y. (2018). A reliable quadratic programming algorithm for convex economic dispatch with renewable power uncertainty. *International Conference on Power and Energy Systems, ICPEs 2018*, 40-43.

17. Sadoudi, S.; Boudour, M.; and Kouba, N. E. Y. (2018). Optimal combined dynamic economic and emission dispatch including wind and photovoltaic power systems. *International Conference on Electrical Sciences and Technologies in Maghreb, CISTEM 2018*, 1-6.
18. Liu, G.; Zhu, Y. L.; and Jiang, W. (2018). Wind-thermal dynamic economic emission dispatch with a hybrid multi-objective algorithm based on wind speed statistical analysis. *IET Generation, Transmission and Distribution*, 12(17), 3972-3984.
19. Yang, X.; and Deb, S. (2009). Cuckoo search via Lévy flights. *World Congresion on Nature and Biologically Inspired Computing, NaBIC 2009*, 210-214.
20. Walton, S.; Hassan, O.; Morgan, K.; and Brown, M. R. (2011). Modified cuckoo search: a new gradient free optimisation algorithm. *Journal on Chaos, Solitons and Fractals*, 44(1), 710-718.
21. Hadji, B.; Mahdad, B.; Srairi, K.; and Mancer, N. (2015). Multi-objective PSO-TVAC for environmental/economic dispatch problem. *International Conference on Technologies and Materials for Renewable Energy, Environment and Sustainability, TMREES15*, 102-111.