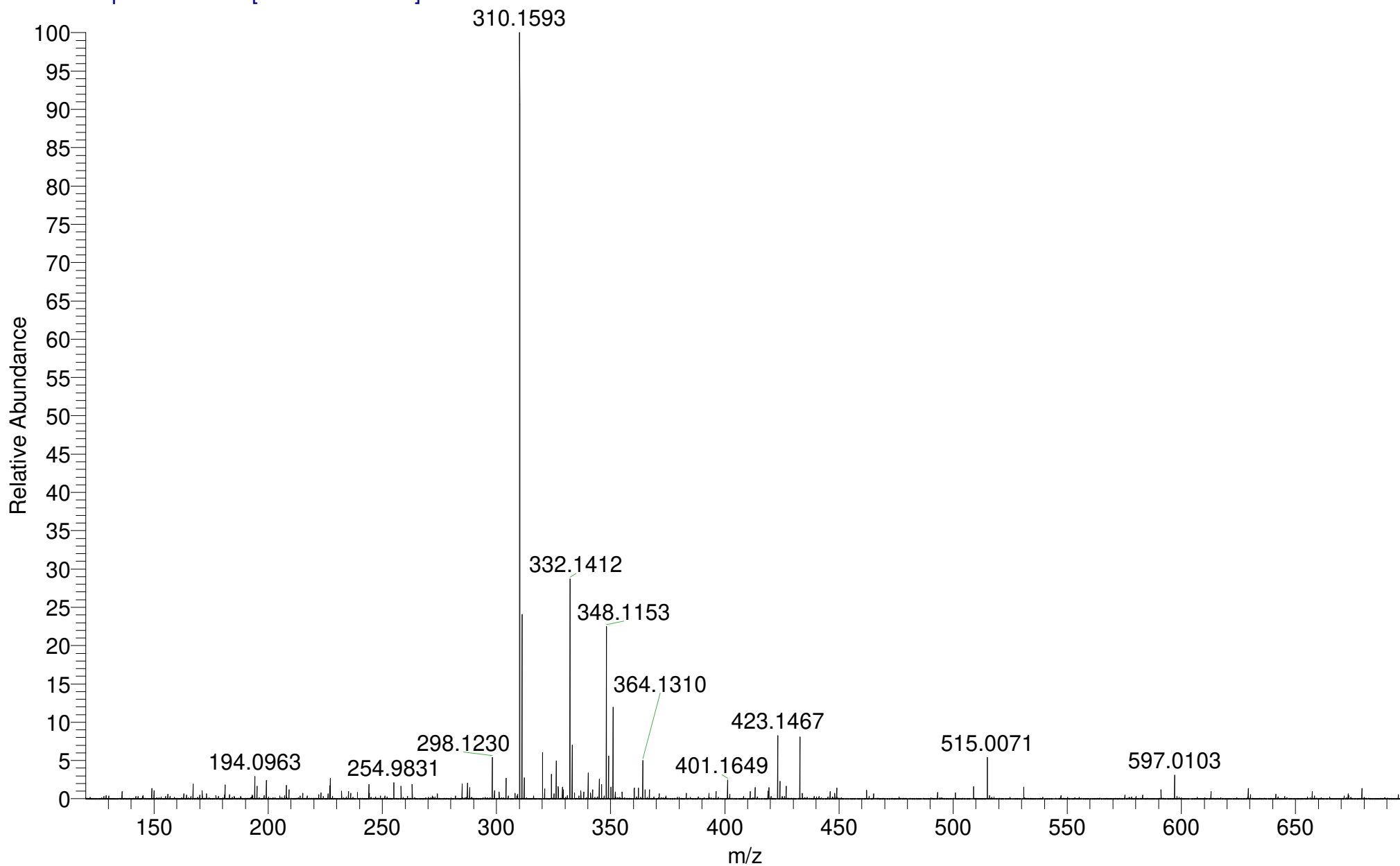
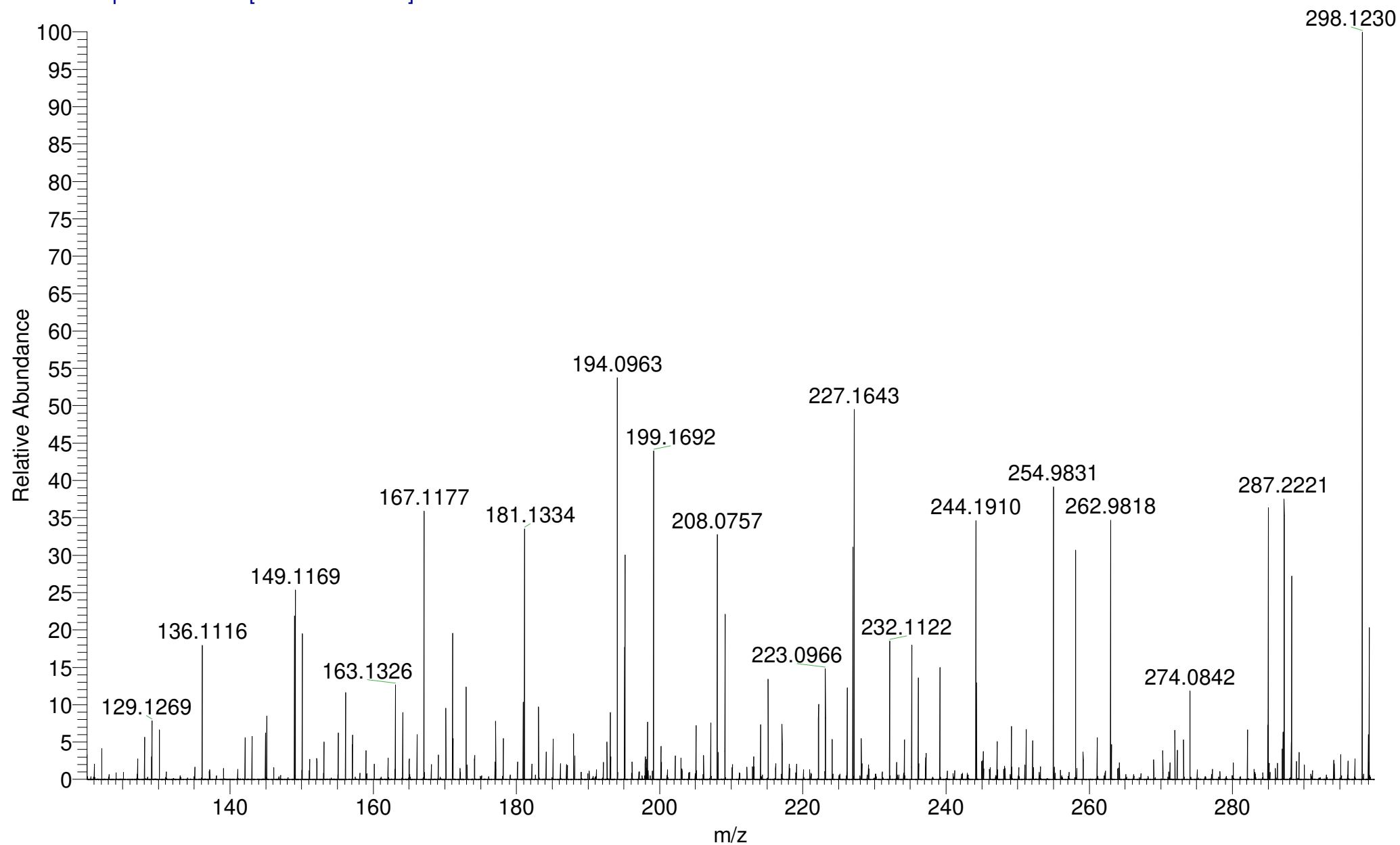


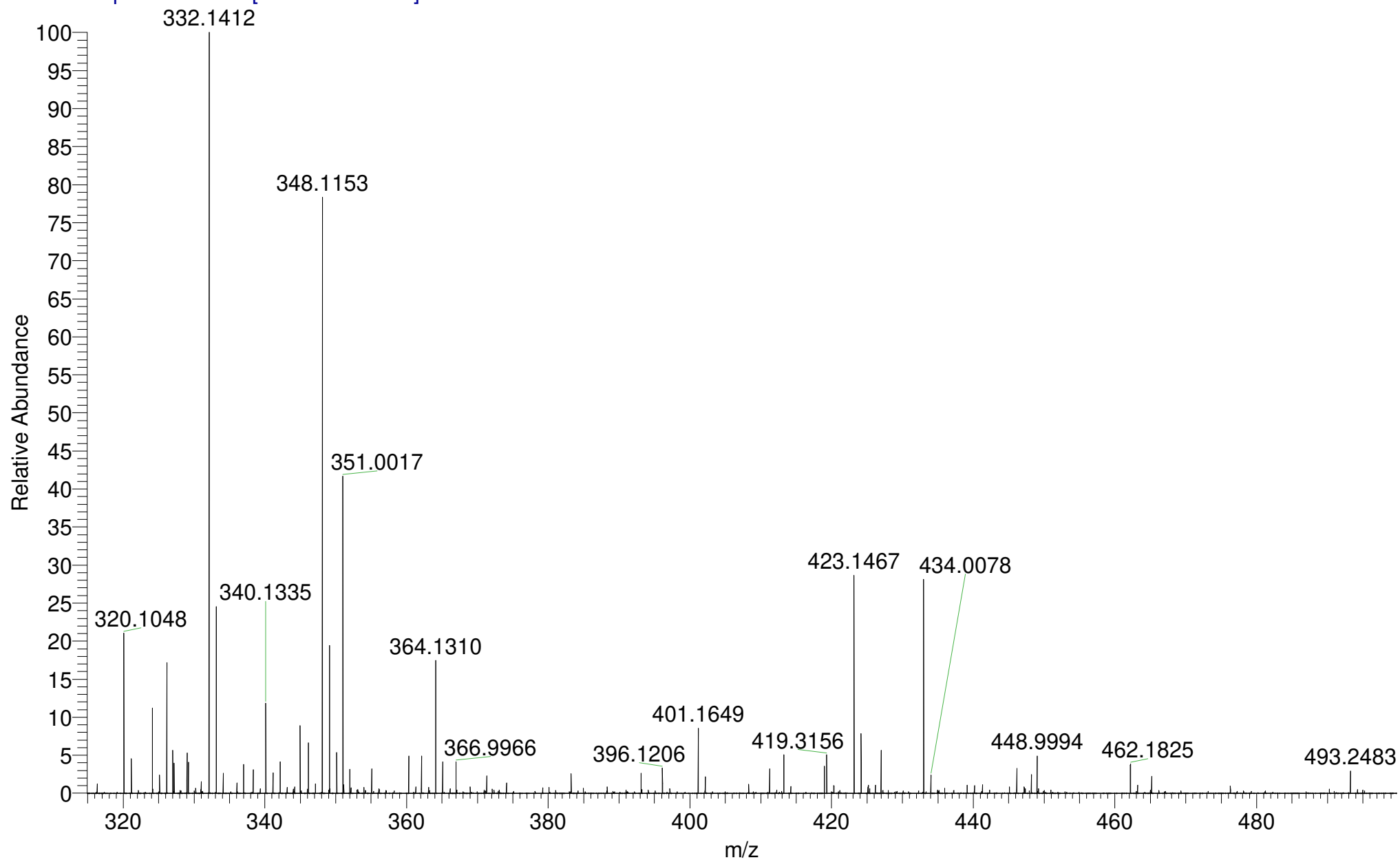
HERLEE_EJEMPL_51970 #41-54 RT: 0.74-1.04 AV: 12 SM: 7G NL: 7.83E6
T: FTMS + p NSI Full ms [120.00-1935.00]



HERLEE_EJEML_51970 #41-54 RT: 0.74-1.04 AV: 12 SM: 7G NL: 4.24E5
T: FTMS + p NSI Full ms [120.00-1935.00]

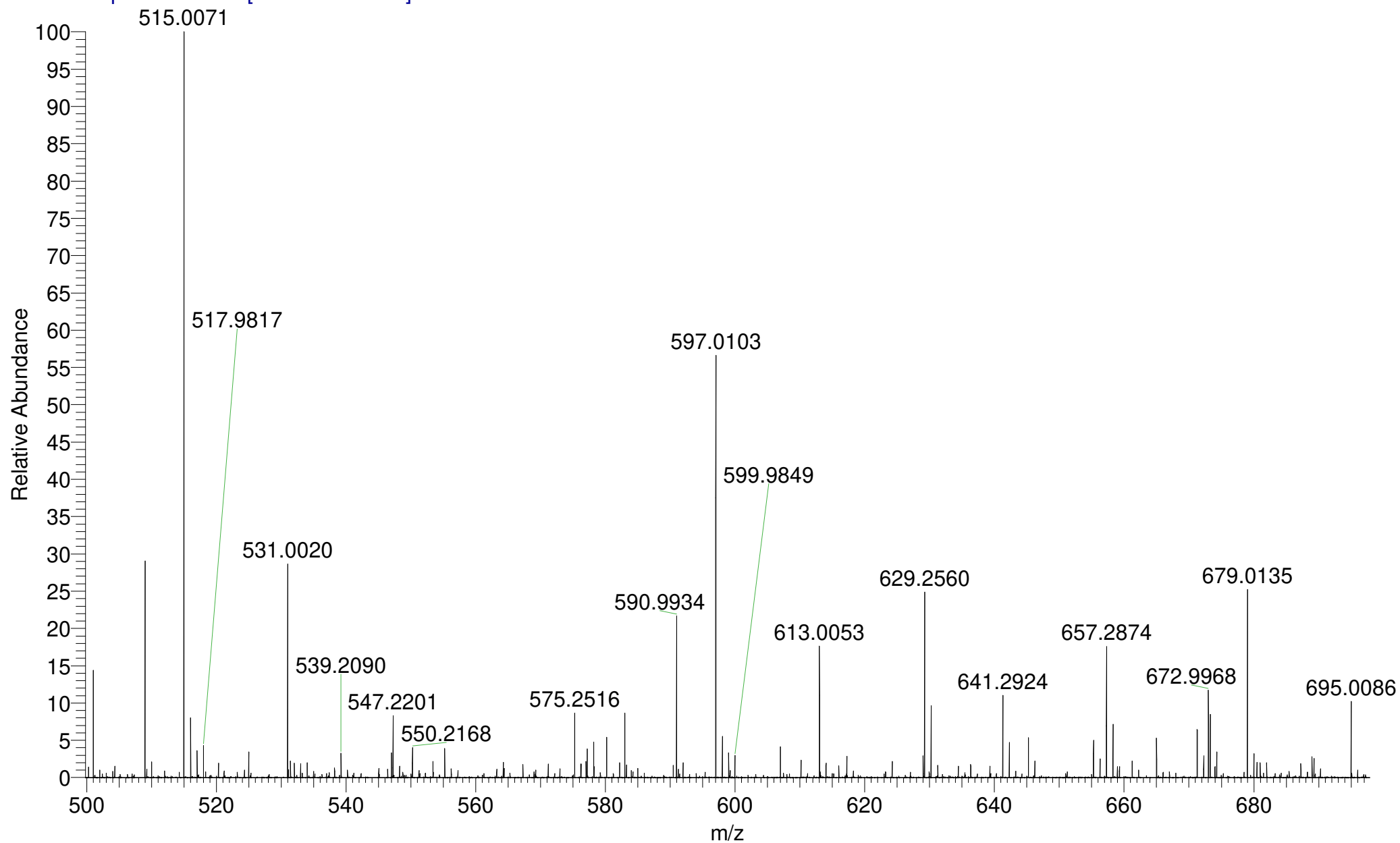


HERLEE_EJEMPL_51970 #41-54 RT: 0.74-1.04 AV: 12 SM: 7G NL: 2.25E6
T: FTMS + p NSI Full ms [120.00-1935.00]

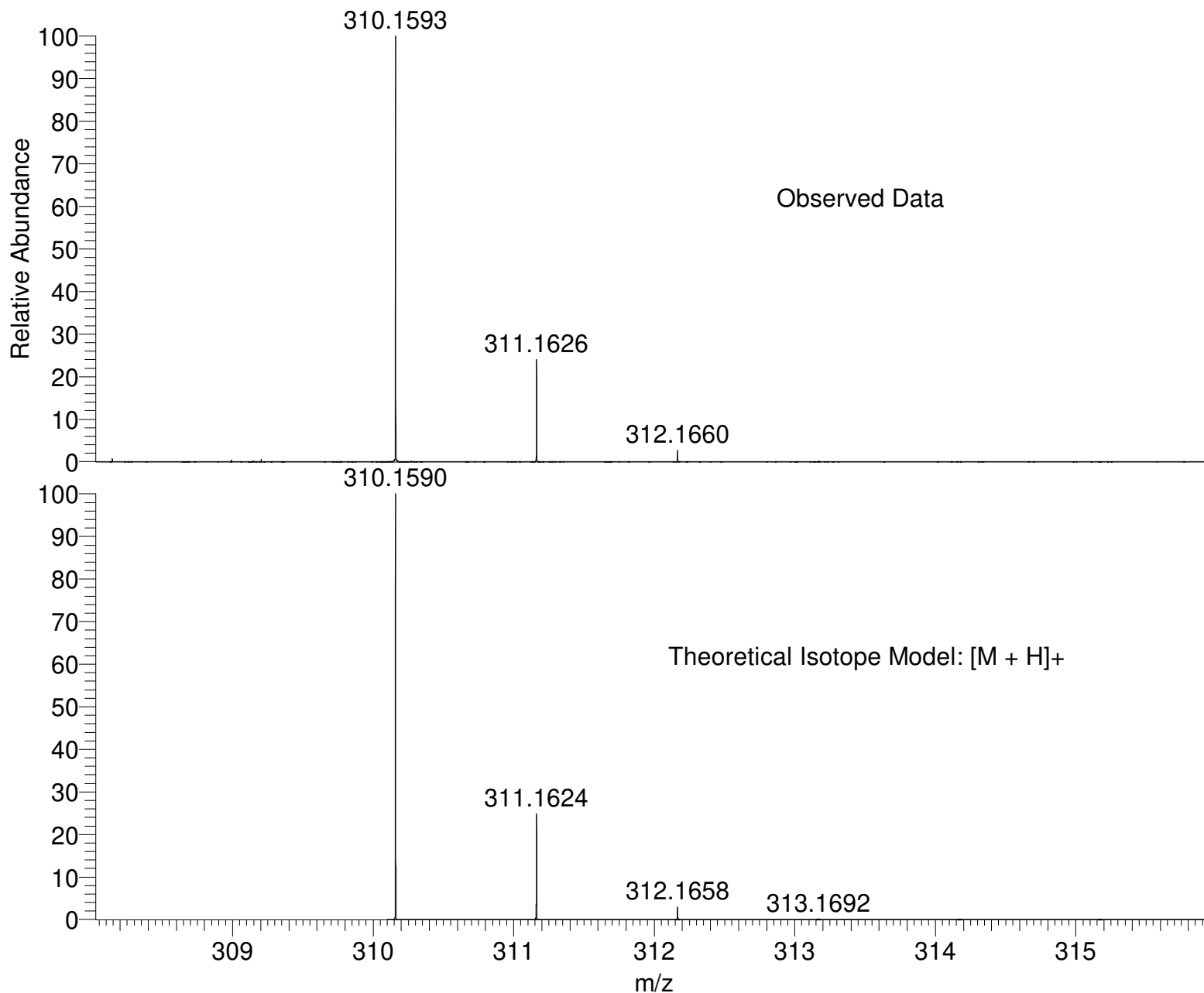


HERLEE_EJEML_51970 #41-54 RT: 0.74-1.04 AV: 12 SM: 7G NL: 4.25E5

T: FTMS + p NSI Full ms [120.00-1935.00]



SM: 7G



NL:
7.83E6
HERLEE_EJEMPL_51970#41-
54 RT: 0.74-1.04 AV: 12 T:
FTMS + p NSI Full ms
[120.00-1935.00]

NL:
1.82E4
C₂₃H₁₉NH:
C₂₃H₂₀N₁
p (gss, s /p:40) Chrg 1
R: 100000 Res .Pwr . @FWHM

Isotope: Min. .. Max.
 14 N 0....10
 16 O 0....10
 12 C 0....60
 1 H 0....80
 23 Na 0....0
 Tolerance Window: +- 5.00 ppm
 Db/Ring Equiv: -30.. 100
 Fits: 500

N-Rule: Do not use
 Charge: 1

Mass	Theoretical Mass	Delta [ppm]	RDB	Composition
310.1593	310.1595	-0.8	2.0	C ₉ H ₂₂ O ₆ N ₆
	310.1590	0.9	14.5	C₁₂H₂₀N₁
	310.1582	3.6	-3.0	C ₈ H ₂₆ O ₁₀ N ₂
	310.1582	3.6	2.5	C ₇ H ₂₀ O ₅ N ₉