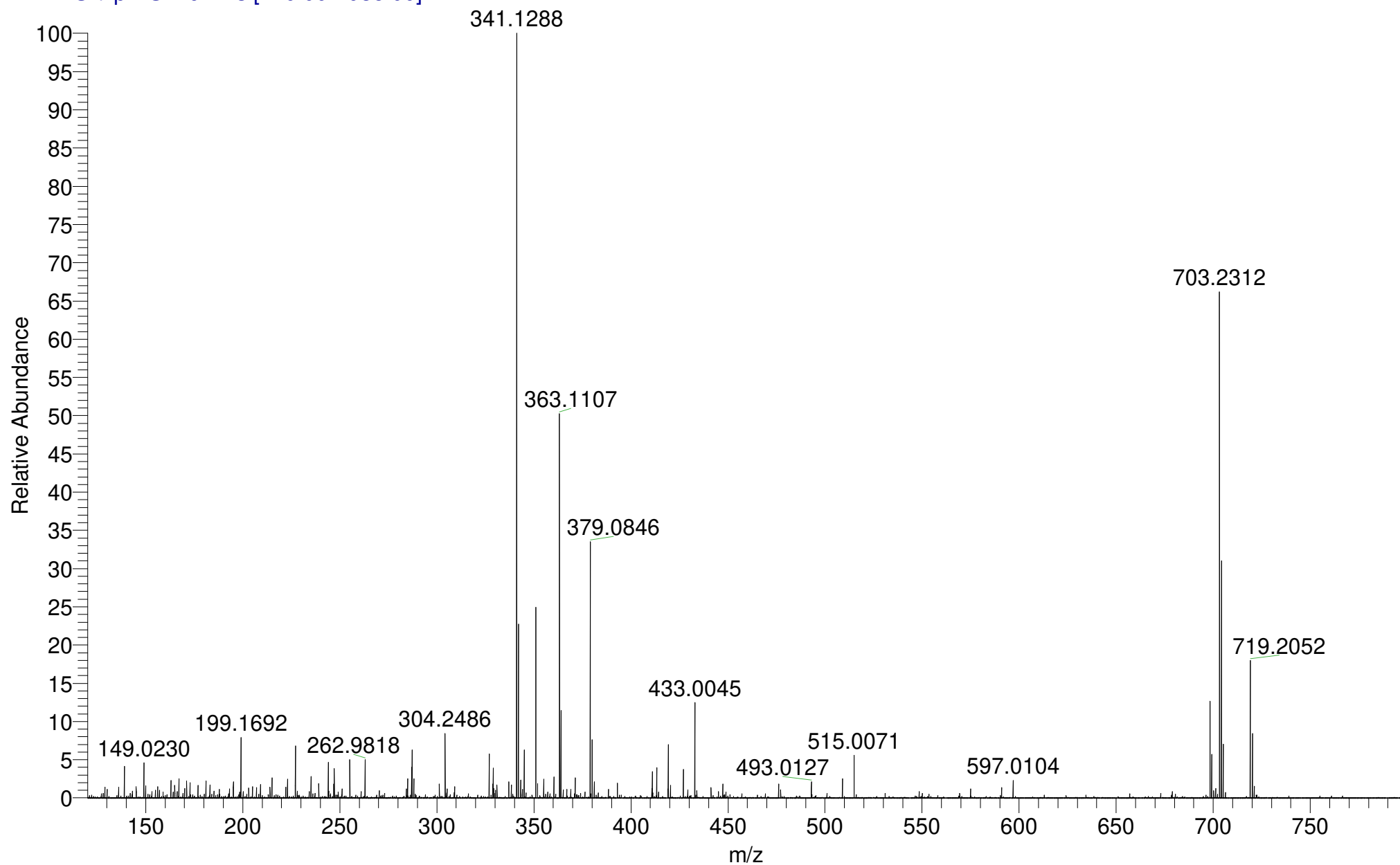
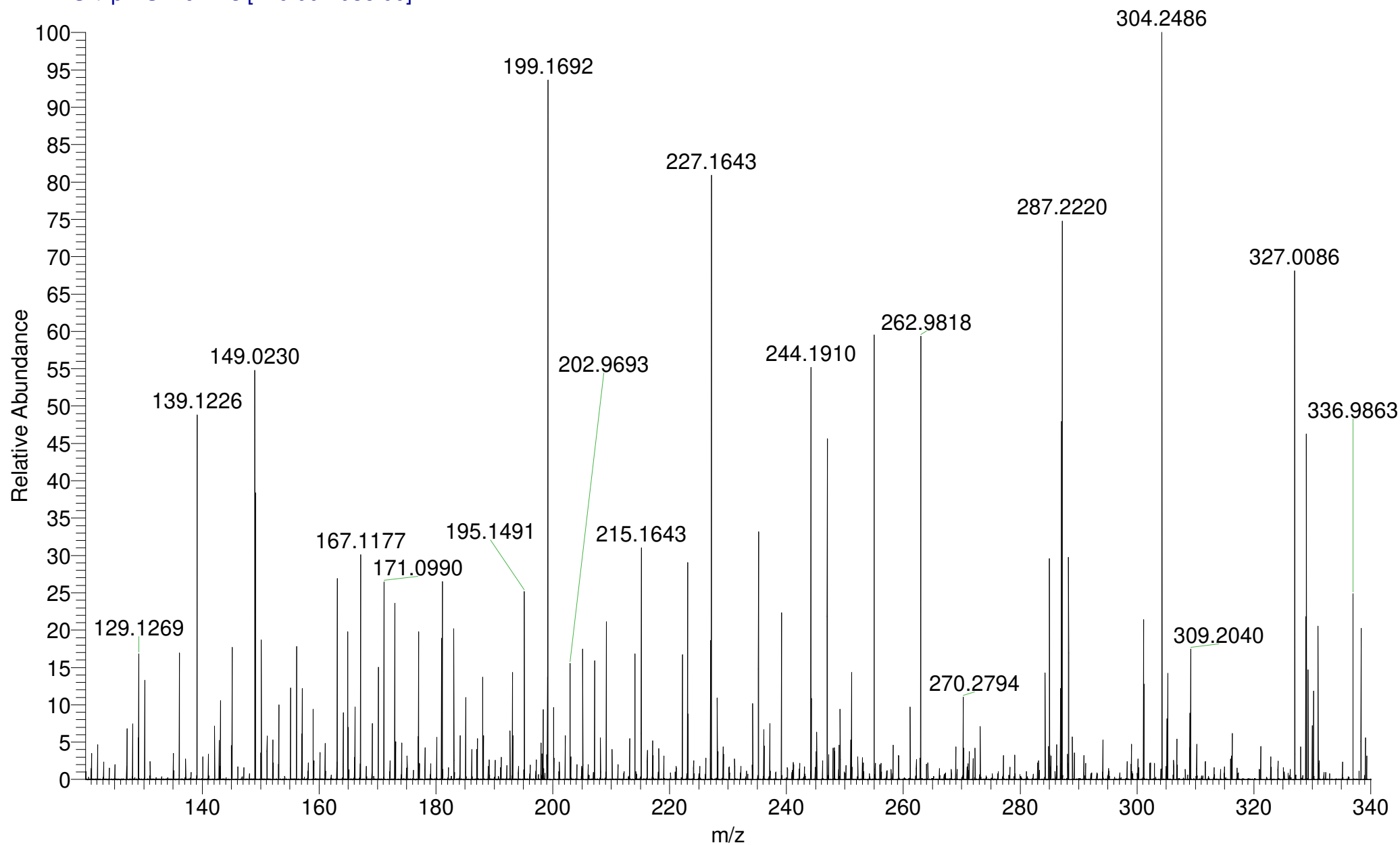


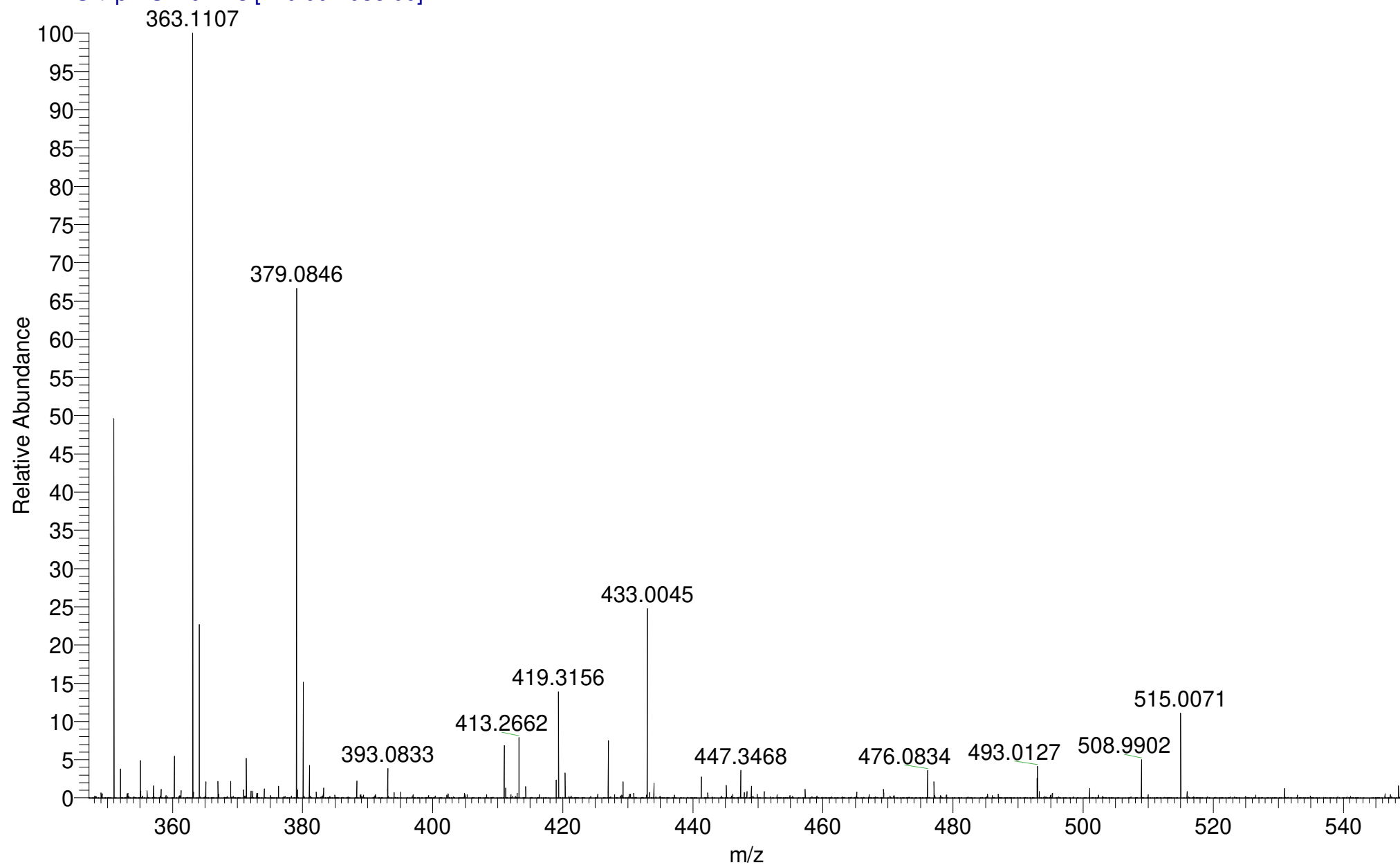
HERLEE_EJE7M_51960 #42-54 RT: 0.74-1.05 AV: 12 SM: 7G NL: 2.40E6
T: FTMS + p NSI Full ms [120.00-1935.00]



HERLEE_EJE7M_51960 #42-54 RT: 0.74-1.05 AV: 12 SM: 7G NL: 2.02E5
T: FTMS + p NSI Full ms [120.00-1935.00]



HERLEE_EJE7M_51960 #42-54 RT: 0.74-1.05 AV: 12 SM: 7G NL: 1.21E6
T: FTMS + p NSI Full ms [120.00-1935.00]

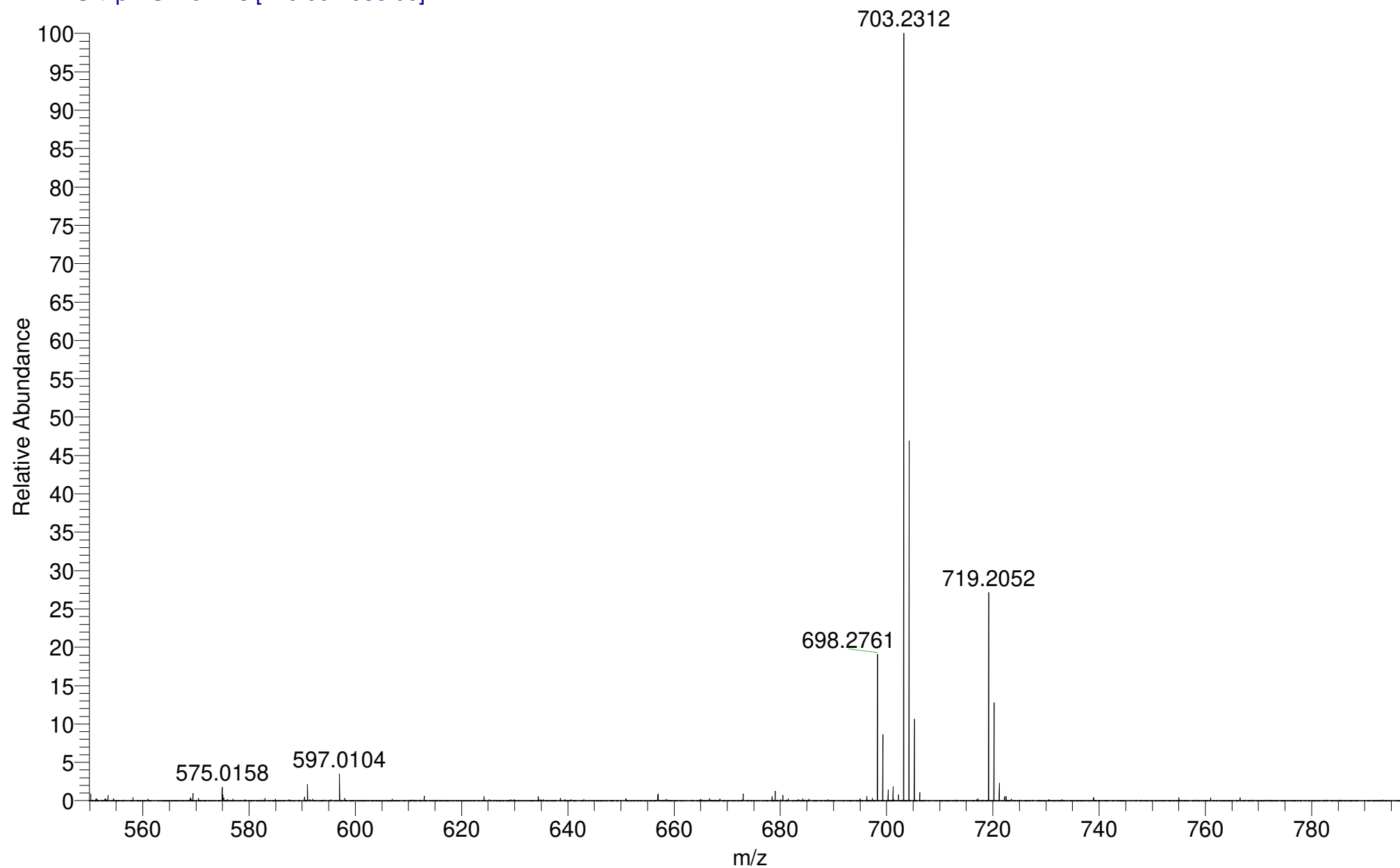


EM233
(DCM)/MeOH+NH4OAc
C22H16N2O2

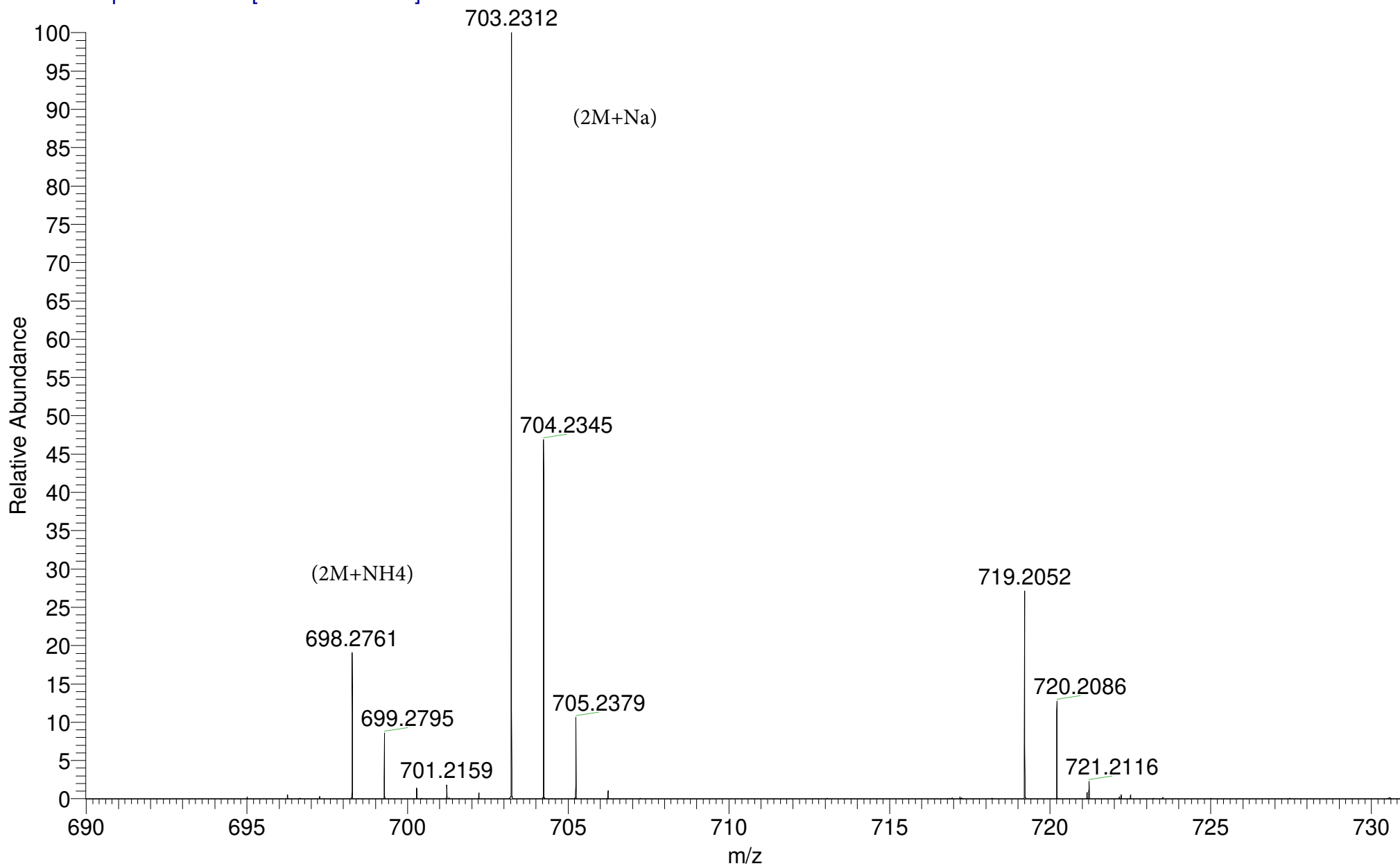
EPSRC National Facility Swansea
LTQ Orbitrap XL

HERLEE-EM
22/03/2019 07:43:03

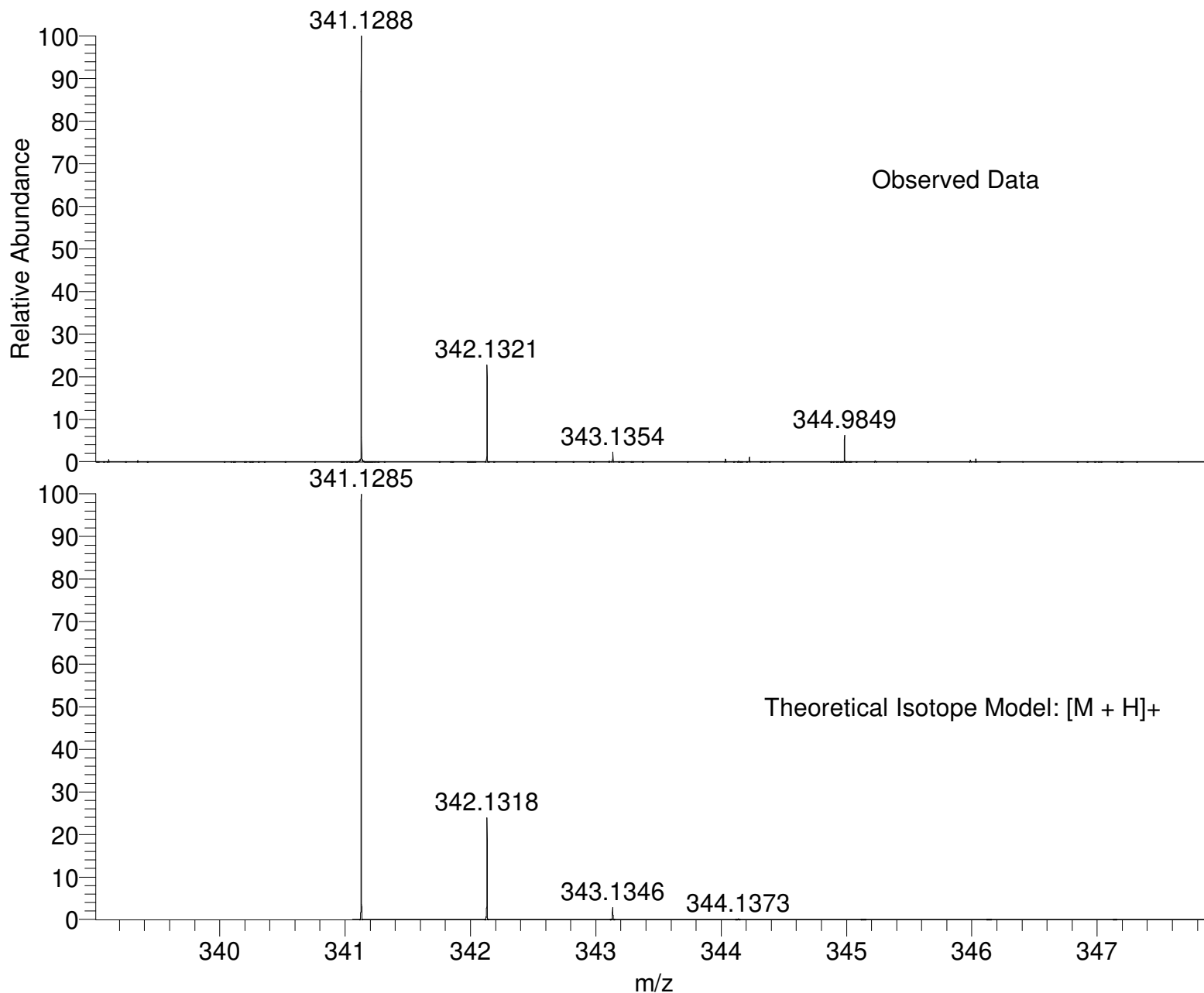
HERLEE_EJE7M_51960 #42-54 RT: 0.74-1.05 AV: 12 SM: 7G NL: 1.59E6
T: FTMS + p NSI Full ms [120.00-1935.00]



HERLEE_EJE7M_51960 #42-54 RT: 0.74-1.05 AV: 12 SM: 7G NL: 1.59E6
T: FTMS + p NSI Full ms [120.00-1935.00]



SM: 7G



NL:
2.40E6
HERLEE_EJE7M_51960#42-
54 RT: 0.74-1.05 AV: 12 T:
FTMS + p NSI Full ms
[120.00-1935.00]

NL:
1.83E4
C₂₂H₁₆N₂O₂ H:
C₂₂H₁₇N₂O₂
p (gss, s/p:40) Chrg 1
R: 100000 Res .Pwr . @FWHM

Isotope: Min. . . Max.
 14 N 012
 16 O 012
 12 C 060
 1 H 080
 23 Na 00
 Tolerance Window: +- 5.00 ppm
 Db/Ring Equiv: -30.. 100
 Fits: 500

N-Rule: Do not use
 Charge: 1

Mass	Theoretical Mass	Delta [ppm]	RDB	Composition
341.1288	341.1290	-0.5	3.0	C ₈ H ₁₉ O ₈ N ₇
	341.1285	1.0	15.5	C₂₂H₁₇O₂N₂
	341.1276	3.4	-2.0	C ₇ H ₂₃ O ₁₂ N ₃
	341.1276	3.5	3.5	C ₆ H ₁₇ O ₇ N ₁₀
	341.1303	-4.4	8.0	C ₉ H ₁₅ O ₄ N ₁₁
	341.1303	-4.4	2.5	C ₁₀ H ₂₁ O ₉ N ₄
	341.1271	4.9	16.0	C ₂₀ H ₁₅ O ₁ N ₅