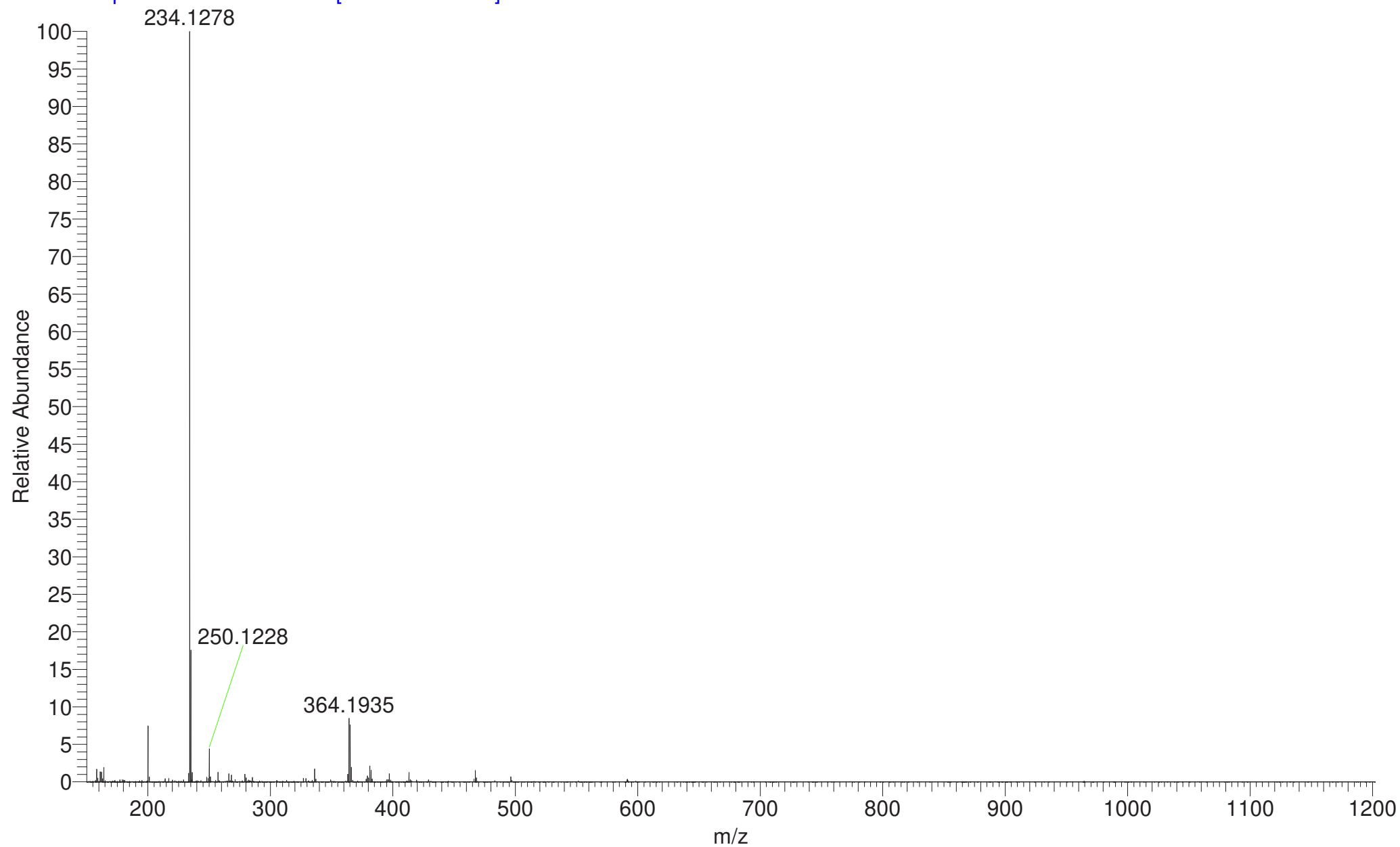
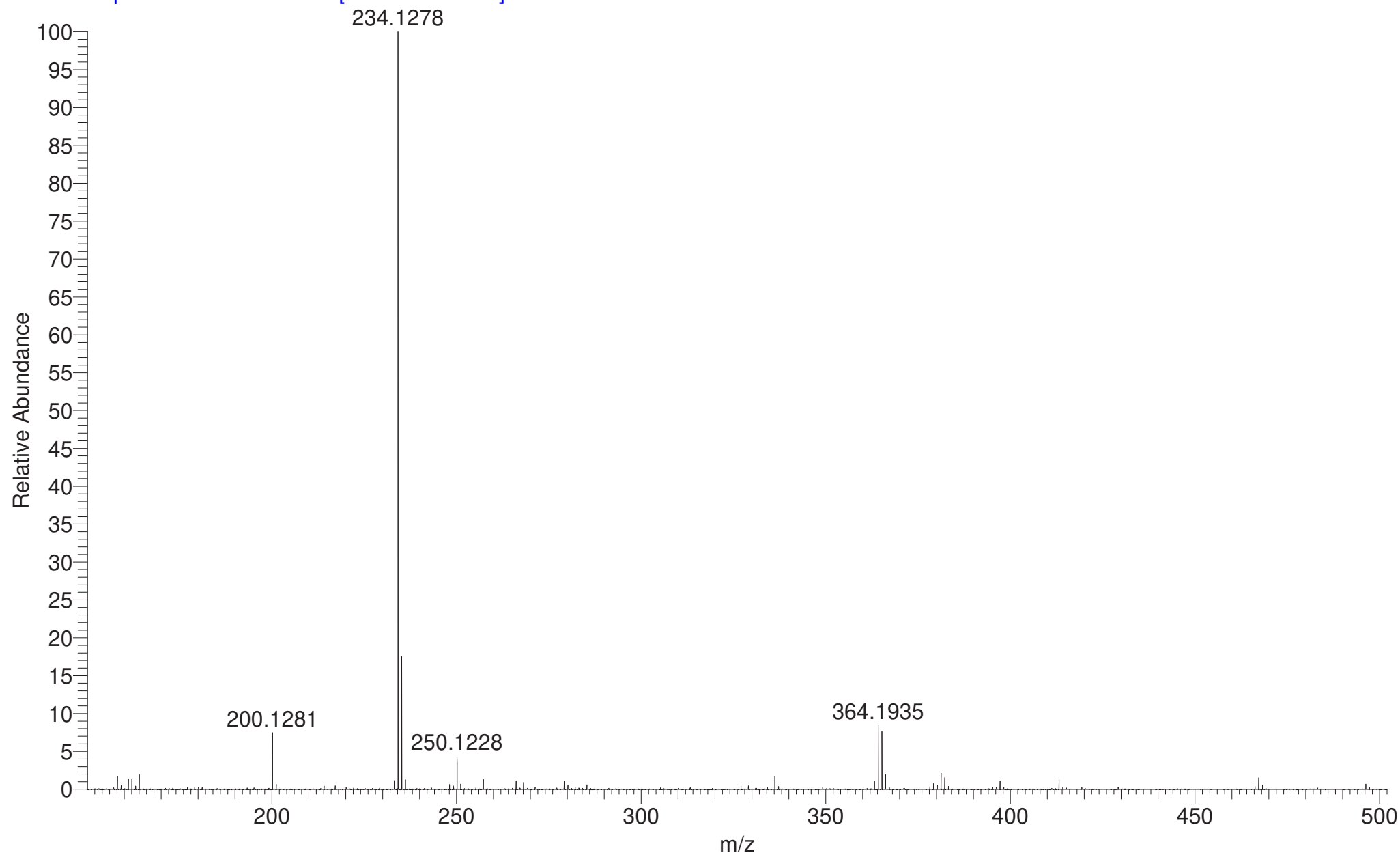


HERLEE_EE7MV_PA_A #17-18 RT: 0.91-0.97 AV: 2 NL: 6.22E7
T: FTMS + p APCI corona Full ms [150.00-1200.00]

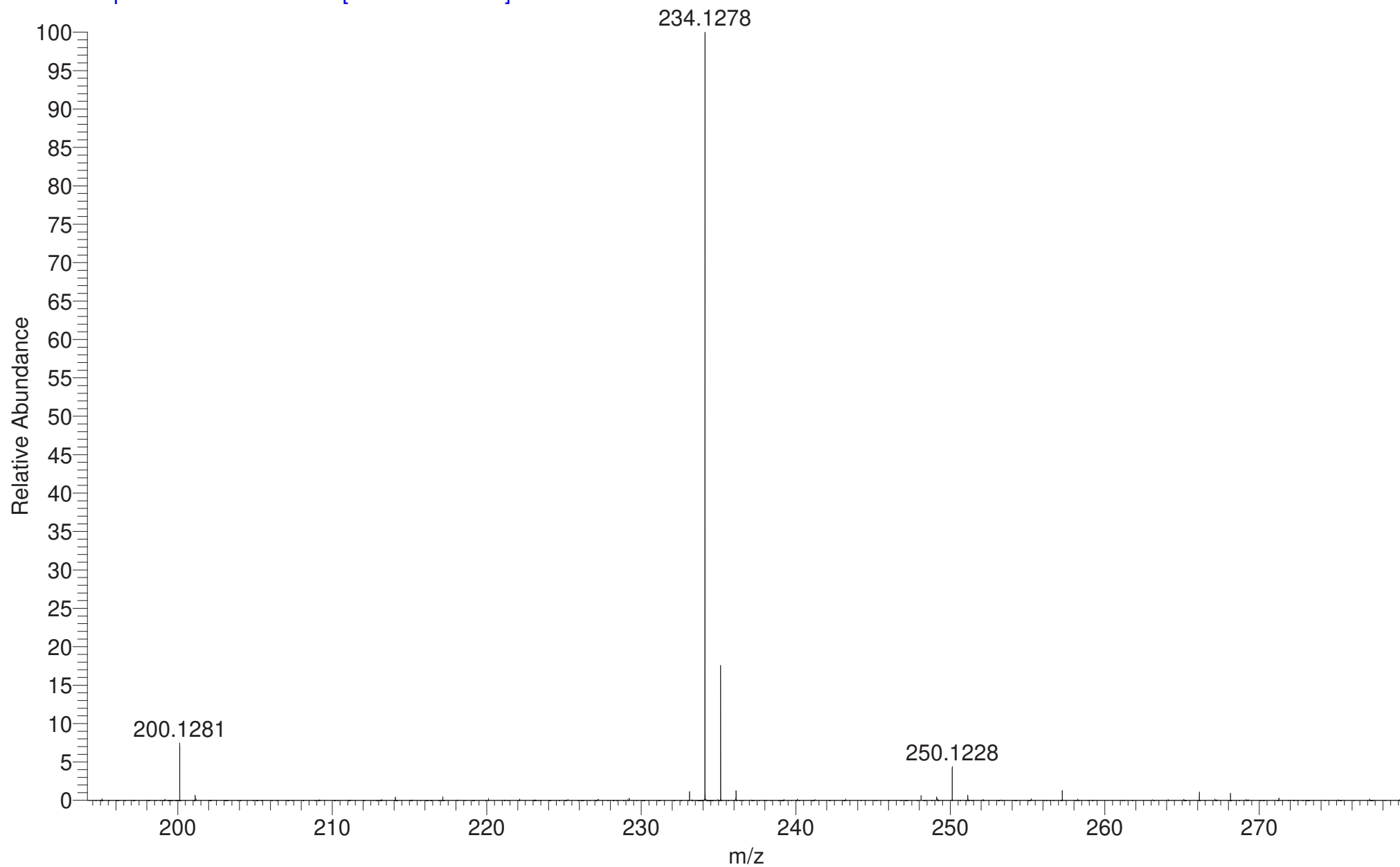


HERLEE_EE7MV_PA_A #17-18 RT: 0.91-0.97 AV: 2 NL: 6.22E7

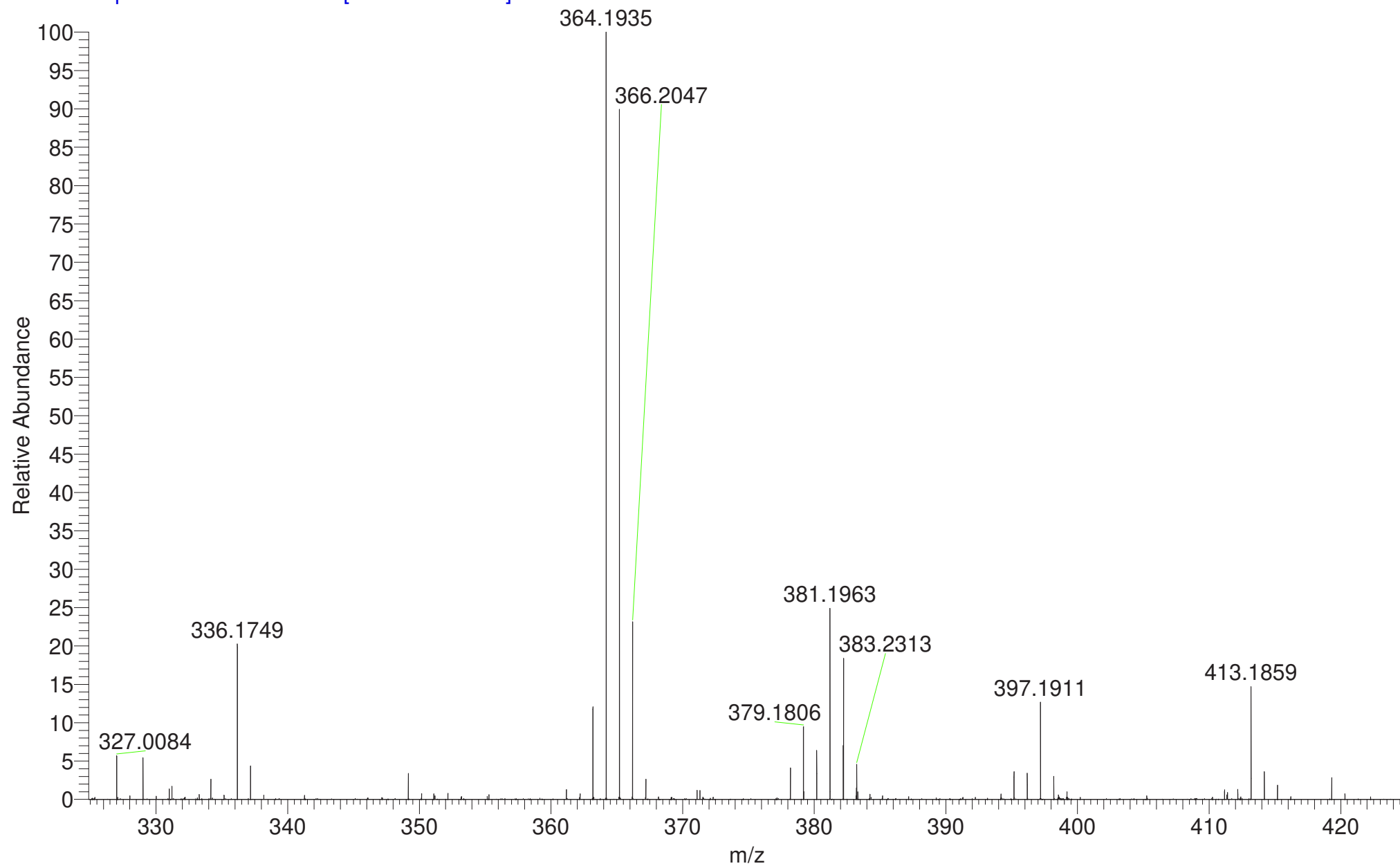
T: FTMS + p APCI corona Full ms [150.00-1200.00]

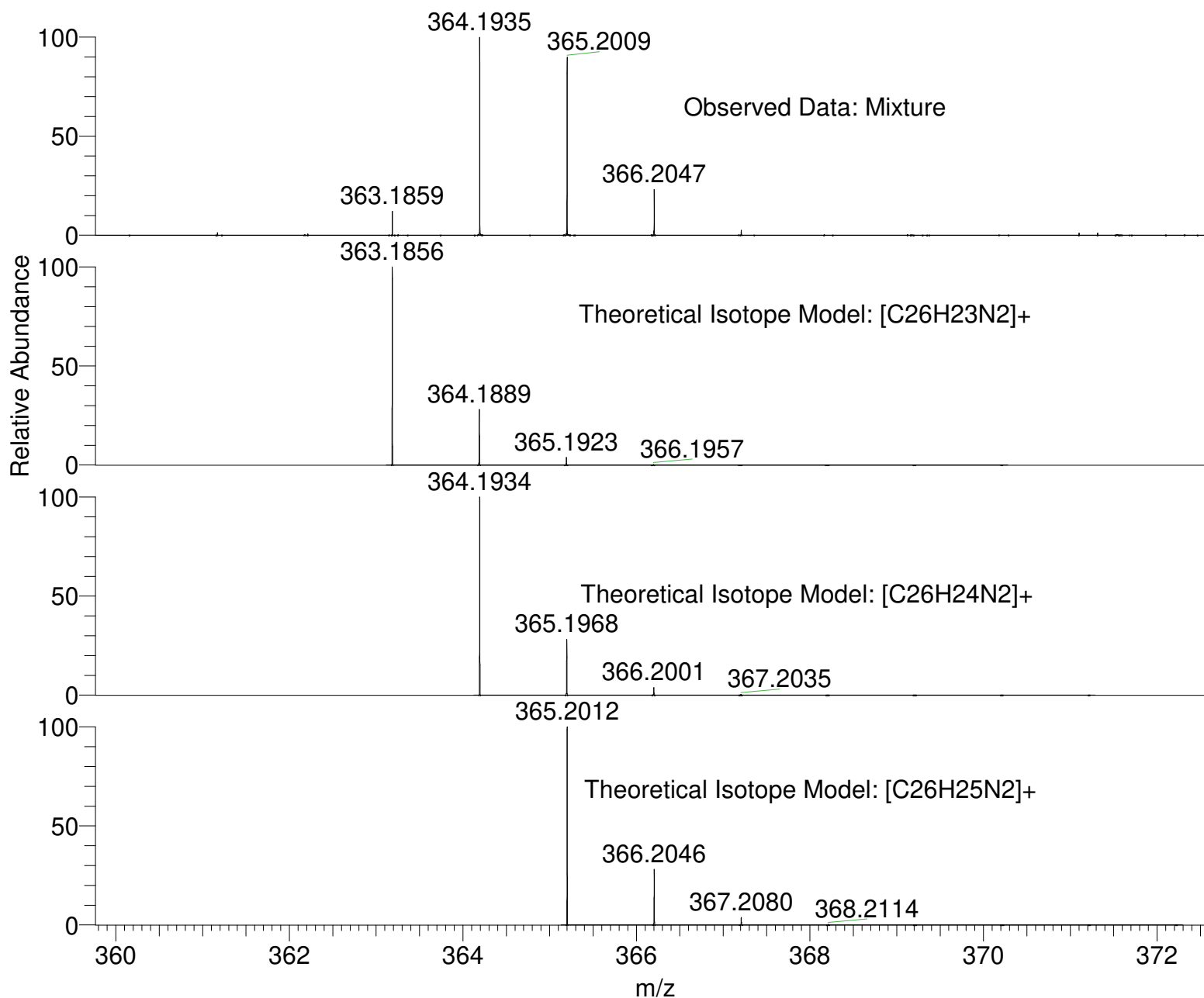


HERLEE_EE7MV_PA_A #17-18 RT: 0.91-0.97 AV: 2 NL: 6.22E7
T: FTMS + p APCI corona Full ms [150.00-1200.00]



HERLEE_EE7MV_PA_A #17-18 RT: 0.91-0.97 AV: 2 NL: 5.26E6
T: FTMS + p APCI corona Full ms [150.00-1200.00]





NL:
5.26E6
HERLEE_EE7MV_PA_A#17-
18 RT: 0.91-0.97 AV: 2 T:
FTMS + p APCI corona Full ms
[150.00-1200.00]

NL:
1.76E4
C₂₆ H₂₃ N₂:
C₂₆ H₂₃ N₂
p (gss, s /p:40) Chrg 1
R: 100000 Res .Pwr . @FWHM

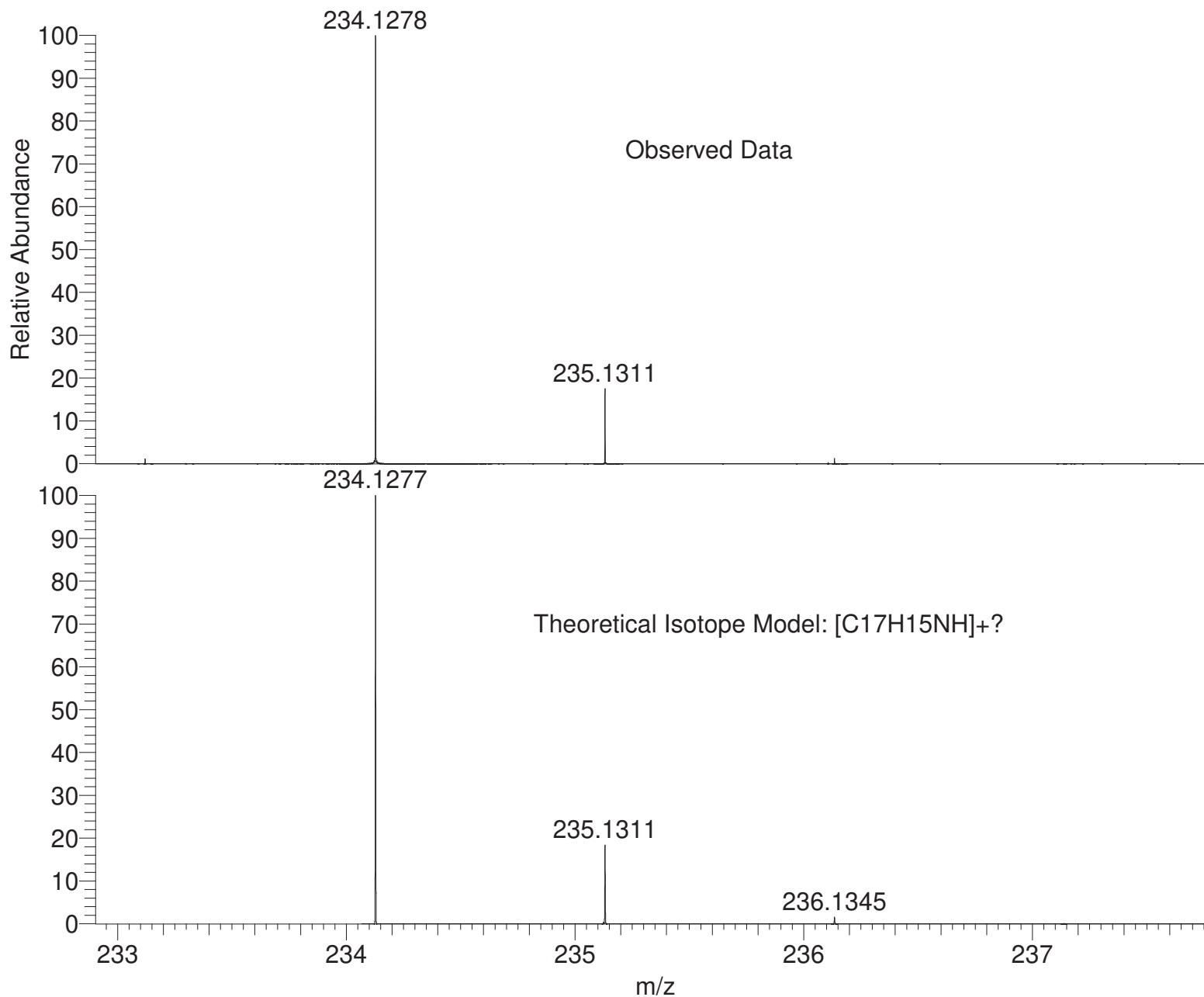
NL:
1.76E4
C₂₆ H₂₄ N₂:
C₂₆ H₂₄ N₂
p (gss, s /p:40) Chrg 1
R: 100000 Res .Pwr . @FWHM

NL:
1.76E4
C₂₆ H₂₅ N₂:
C₂₆ H₂₅ N₂
p (gss, s /p:40) Chrg 1
R: 100000 Res .Pwr . @FWHM

Isotope: Min. .. Max.
 14 N 0....15
 16 O 0....15
 12 C 0....80
 1 H 0....100
 23 Na 0....0
 Tolerance Window: +- 5.00 ppm
 Db/Ring Equiv: -3.. 100
 Fits: 150

N-Rule: Do not use
 Charge: 1

Mass	Theoretical Mass	Delta [ppm]	RDB	Composition
363.1859	363.1861	-0.5	9.5	C ₁₁ H ₁₉ O ₁ N ₁₄
	363.1861	-0.5	4.0	C ₁₂ H ₂₅ O ₆ N ₇
	363.1861	-0.5	-1.5	C ₁₃ H ₃₁ O ₁₁
	363.1856	0.9	16.5	C ₂₆ H ₂₃ N ₂
	363.1847	3.2	-1.0	C ₁₁ H ₂₉ O ₁₀ N ₃
	363.1847	3.2	4.5	C ₁₀ H ₂₃ O ₅ N ₁₀
	363.1874	-4.2	9.0	C ₁₃ H ₂₁ O ₂ N ₁₁
	363.1874	-4.2	3.5	C ₁₄ H ₂₇ O ₇ N ₄
	364.1935	364.1934	0.3	16.0
364.1939		-1.1	9.0	C ₁₁ H ₂₀ O ₁ N ₁₄
364.1939		-1.1	3.5	C ₁₂ H ₂₆ O ₆ N ₇
364.1939		-1.1	-2.0	C ₁₃ H ₃₂ O ₁₁
364.1926		2.6	-1.5	C ₁₁ H ₃₀ O ₁₀ N ₃
364.1926		2.6	4.0	C ₁₀ H ₂₄ O ₅ N ₁₀
364.1952		-4.8	8.5	C ₁₃ H ₂₂ O ₂ N ₁₁
364.1953		-4.8	3.0	C ₁₄ H ₂₈ O ₇ N ₄
365.2009		365.2012	-0.9	15.5
	365.2004	1.4	-2.0	C ₁₁ H ₃₁ O ₁₀ N ₃
	365.2004	1.4	3.5	C ₁₀ H ₂₅ O ₅ N ₁₀
	365.2017	-2.3	8.5	C ₁₁ H ₂₁ O ₁ N ₁₄
	365.2017	-2.3	3.0	C ₁₂ H ₂₇ O ₆ N ₇
	365.2017	-2.3	-2.5	C ₁₃ H ₃₃ O ₁₁



NL:
6.22E7
HERLEE_EE7MV_PA_A#17-
18 RT: 0.91-0.97 AV: 2 T:
FTMS + p APCI corona Full ms
[150.00-1200.00]

NL:
1.94E4
C₁₇ H₁₆ N:
C₁₇ H₁₆ N₁
p (gss, s /p:40) Chrg 1
R: 100000 Res .Pwr . @FWHM

Isotope: Min. .. Max.
 14 N 0....15
 16 O 0....15
 12 C 0....80
 1 H 0....100
 23 Na 0....0
 Tolerance Window: +- 5.00 ppm
 Db/Ring Equiv: -3.. 100
 Fits: 150

N-Rule: Do not use
 Charge: 1

Mass	Theoretical Mass	Delta [ppm]	RDB	Composition
234.1278	234.1277	0.3	10.5	C ₁₇ H ₁₆ N ₁
	234.1282	-1.8	3.5	C ₂ H ₁₂ O ₁ N ₁₃
	234.1282	-1.9	-2.0	C ₃ H ₁₈ O ₆ N ₆
	234.1269	3.9	-1.5	C ₁ H ₁₆ O ₅ N ₉